



User Documentation



Bachmann Software

270 Sparta Avenue
Suite 104, PMB 318
Sparta, NJ 07871
United States

PrintBoy copyright 1999-2004 by Bachmann Software and Services, LLC and its licensors. All rights reserved. All products, services and company names are trademarks, registered trademarks or services marks of their respective owners.

This documentation may be printed by the licensee for personal use. No part of this documentation may be reproduced or transmitted in any form by any means, electronic or mechanical, including photocopying, recording, or any information storage and retrieval system, without permission in writing from Bachmann Software and Services, LLC.

Bachmann Software and Services, PrintBoy, the PrintBoy logo, Bachmann Print Manager, PrintBoy Anywhere, Deluxe, PrintBoy Documents, PrintBoy Spreadsheet, PrintBoy Database and the Bachmann Software and Services logo are registered trademarks of Bachmann Software and Services.

All software and documentation are subject to the license agreement found at the end of this document.

How to Contact Bachmann Software:

Bachmann Software

270 Sparta Ave, Suite 104, PMB 318

Sparta, NJ 07871

United States

Voice: (973) 729-9427

Fax: (973) 729-8553

E-Mail: sales@bachmannsoftware.com

Or visit us on the World Wide Web: <http://www.bachmannsoftware.com>

Product Registration and Technical Support:

PrintBoy for Series 60 is available as follows:

- **Registration code version** – This version is included when you either download or purchase software on-line from either Bachmann Software's on-line store, (www.bachmannsoftware.com), Handango, or other online handheld software suppliers. You will receive a registration code at time of purchase.
- **Site license version** – This version is included if you purchase multiple copies of PrintBoy for your office or school directly from Bachmann Software.
- **Pre-registered version** – This version is included if you received a pre-registered copy of PrintBoy for Series 60 bundled with your software or hardware. For example, if PrintBoy came bundled with your Series 60 Smartphone, you may own a pre-registered version.

If you have a pre-registered version of our software, Please register at our website:

<http://www.bachmannsoftware.com/Register>

For Technical Support please visit us on the Web for the most recent software updates, answers to Frequently Asked Questions, and instructions on how to contact us for support issues. **If you have a pre-registered version of our software, you will need to register in order to receive Technical Support.** Technical Support is e-mail only, via our online support form, at <http://www.bachmannsoftware.com/pbsupport.htm>.

Bachmann PrintBoy License Agreement

PLEASE READ THIS LICENSE CAREFULLY BEFORE USING THE SOFTWARE. BY USING THE SOFTWARE YOU ARE AGREEING TO BE BOUND BY THE TERMS OF THIS LICENSE. IF YOU DO NOT AGREE TO THE TERMS OF THIS AGREEMENT, PROMPTLY DESTROY ALL COPIES OF THE SOFTWARE.

1. License. The application, demonstration, system and other software accompanying this License, whether on disk, read only memory or on any other media (the "Software"), the related documentation and fonts are licensed to you by Bachmann Software and Services and its Licensors. This license allows you to use the Software on a single computer. You may use a copy of the software on a home or portable computer as long as the extra copy is never loaded at the same time the software is loaded on the primary computer on which you use the Software. You may make one copy of the Software in machine readable form for backup purposes. You also transfer all your license rights in the Software, the backup copy of the Software, the related documentation and a copy of this License to another party, provided the other party reads and agrees to accept the terms and conditions of this License.
2. Restrictions. The Software contains copyrighted material, trade secrets, and other proprietary material. In order to protect them, and except as permitted by applicable legislation, you may not decompile, reverse engineer, disassemble or otherwise reduce the Software to a human perceivable form. You may not modify, rent, lease, loan, distribute or create derivative works based upon the software in whole or in part. You may use the Software to develop freeware or shareware.
3. You may not use the Software to create a product which competes in any way with the Software.
4. Software end users may not use the "run-time modules" or any other Software components for development purposes.
5. You agree to indemnify, hold harmless and defend Bachmann Software and Services, LLC and its suppliers from and against any and all claims or lawsuits including attorney's fees that arise or result from the use and distribution of your product. If any of the conditions set forth in paragraphs 1 through 4 are breached, such breach shall constitute an unlawful use of the Software, and you shall be prosecuted to the full extent of the law. Furthermore, you shall be liable to Bachmann Software and Services, LLC for all damages caused by such breach and unlawful use of the software, including attorney's fees and costs incurred in any action, lawsuit or claim brought or filed to redress the breach of this agreement.

LIMITED WARRANTY

LIMITED WARRANTY. Bachmann Software and Services, LLC warrants that the Software will perform substantially in accordance with the accompanying written materials for a period of thirty (30) days from the date of receipt.

CUSTOMER REMEDIES. Bachmann Software and Services, LLC and its suppliers' entire liability and your exclusive remedy in the event of a defect in materials and workmanship of the Software under normal use during the Limited Warranty period shall be, at Bachmann Software and Services, LLC's option, either a) return of the price paid by you in exchange for all Software contents including written materials; or b) repair or replacement of the Software that does not meet Bachmann Software and Services, LLC's Limited Warranty and which is returned to Bachmann Software and Services, LLC with a copy of your receipt. This Limited Warranty is void if failure of the Software has resulted from accident, abuse or misapplication. Any replacement Software will be warranted for the remainder of the original warranty period or ten (10) days, whichever is longer.

NO OTHER WARRANTIES. There are no other warranties to the maximum extent permitted by applicable law. Bachmann Software and Services, LLC and its suppliers disclaim all other warranties, either express or implied, including but not limited to implied warranties of merchantability and fitness for a particular purpose, with regard to the Software, the accompanying written materials and any accompanying hardware.

NO LIABILITIES FOR CONSEQUENTIAL OR INCIDENTAL DAMAGES. To the maximum extent permitted by law, in no event shall Bachmann Software and Services, LLC or its suppliers be liable for any damages whatsoever (including without limitation, damages for loss of business profits, business interruption, loss of business information, or any other pecuniary loss) arising out of the use of or inability to use this Bachmann

Software and Services, LLC product, even if Bachmann Software and Services, LLC has been advised of the possibility of such damages.



.....	1
BACHMANN PRINTBOY LICENSE AGREEMENT	3
1. INTRODUCTION: WELCOME TO PRINTBOY!.....	6
1.1. What is PrintBoy™ for Series 60?	6
1.2. The PrintBoy Print Engine and Printer Drivers	6
1.3. What if my printer doesn't support Infrared or Bluetooth?	6
2.0 INSTALLING PRINTBOY FOR SERIES 60	7
2.1 Pre-Installation Checklist.....	7
2.2 Installing PrintBoy	7
3.0 CONFIGURING PRINTBOY FOR YOUR PRINTER WITH PRINT SETUP	8
Choosing Your Default Printer	9
4. PRINTING WITH PRINTBOY	10
4.1. The PrintBoy Application.....	10
Printing your SmartPhone's Call Log.....	10
Printing Documents, Spreadsheets and Presentations with QuickOffice	11
5. TECHNICAL SUPPORT.....	12
5.1. Obtaining Technical Support	12
6. INTEGRATION WITH OTHER SERIES 60 APPLICATIONS: LAUNCHING PRINTBOY FROM OTHER SERIES 60 APPLICATIONS.....	13

1. Introduction: Welcome to PrintBoy!

Thank you for selecting PrintBoy for Series 60! This section of the manual describes what PrintBoy can do for you.

1.1. What is PrintBoy™ for Series 60?

PrintBoy enables you to print information from your Series 60 Smartphone directly to your printer through an infrared or Bluetooth connection.

PrintBoy for Series 60 can print documents, spreadsheets, and presentations which are stored on your smartphone as either e-mail attachments or standalone .doc, .xls or .ppt files. This capability requires the presence of QuickOffice (QuickWord, QuickSheet or QuickPoint), the most popular office software for Series 60 smartphones. QuickOffice is bundled free with many Series 60 smartphones. If you need to download a copy of QuickOffice, you can visit the QuickOffice web site at <http://www.quickoffice.com>.

PrintBoy for Series 60 can also print your Call Log to allow you to easily create a hardcopy report on your wireless account usage.

We are adding new printing capabilities to PrintBoy for Series 60 all the time, so please visit our web site <http://www.bachmannsoftware.com> frequently to check for updates to PrintBoy. If you would like to suggest an enhancement or new PrintBoy feature, we also invite you to send us your suggestion via e-mail to sales@bachmannsoftware.com

1.2. The PrintBoy Print Engine and Printer Drivers

PrintBoy leverages the power of our industry-standard Bachmann Print Manager print engine to create lightning-fast, formatted to popular printers. Simply connect your Series 60 smartphone to a printer using infrared or Bluetooth, and tap “print” – your information will be formatted and immediately printed on readable, full-size paper.

Important! PrintBoy does not need a personal computer to print. Instead, PrintBoy comes with special print drivers that enable your Series 60 compatible smartphone to print directly to your printer.

1.3. What if my printer doesn't support Infrared or Bluetooth?

Many printers have built in infrared or Bluetooth connectivity. If your printer does not, you can upgrade your printer to support infrared or Bluetooth by the addition of a plug-in adapter that attaches to your printer's parallel port.

Infrared Adapters

For your convenience, we offer our popular InfraReady and InfraReady Plus adapter for purchase on our web site.

Bluetooth Adapters

We also offer our BTReady adapter which adds a Bluetooth receiver to your printer, also available for purchase on our web site.

For more information on InfraReady or BTReady, please visit our web site
<http://www.bachmannsoftware.com>

2.0 Installing PrintBoy for Series 60

This section describes how to install and PrintBoy on your Series 60 smartphone.

2.1 Pre-Installation Checklist

To use PrintBoy you will need the following:

- A Series 60 smartphone, such as the Nokia 3650, 6600 or 6620.
- A compatible printer with either infrared or Bluetooth support (either built-in or added on via our InfraReady or BTReady adapters)

To install PrintBoy on your Series 60 smartphone, you will need either:

- A PC or laptop with an available infrared or Bluetooth connection
- A wireless email account on your phone for receiving PrintBoy as an email attachment

To view a list of printers that are compatible with PrintBoy for Series 60, please visit our Support area on our website <http://www.bachmannsoftware.com/support.htm>. If your printer is not listed, please let us know by sending an e-mail to support@bachmannsoftware.com.

2.2 Installing PrintBoy

PrintBoy is easy to install!

Your first step is to transfer the installation file PrintBoy.sis to your Series 60 smartphone. You can do this by either:

- a) connecting to your PC over infrared or Bluetooth and copying PrintBoy.sis to your smartphone, or
- b) by sending the file PrintBoy.sis to your smartphone's email account and receiving it as an e-mail attachment.

For instructions on how to connect your smartphone to your PC or laptop, please consult the instructions that came with your smartphone.

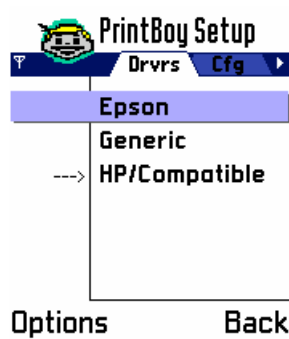
Once PrintBoy.sis is installed on your smartphone, simply open it and follow the instructions that appear on your smartphone's display. After installation is complete, you will see a new PrintBoy icon on your smartphone's main Applications screen.

To run PrintBoy, simply select the new PrintBoy icon and run it like any other program that is on your smartphone.

3.0 Configuring PrintBoy for your Printer with Print Setup

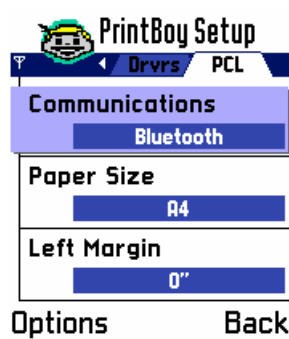
Once PrintBoy has been successfully installed, you need to configure your chosen printer as your default printer. PrintBoy comes with a Print Setup utility that lets you configure your printer and the communications method that will work best for achieving printing connectivity with your printer.

To run PrintSetup, choose Printer Setup from the main PrintBoy screen. The PrintSetup screen will appear as follows:



There are two tabs available on this screen: Drivers and Configuration. First, choose a printer driver that closely matches your target printer (for example, HP/Compatible for a PCL-compatible printer) by navigating up or down within the Drivers list. Select the driver you wish to work with by pressing the Select button on your Smartphone. (for more information on what printers are compatible with PrintBoy, please visit <http://www.bachmannsoftware.com/support.htm>)

Once you have selected a printer driver, press the right arrow on your smartphone to navigate to the Configuration screen for your printer. The Configuration screen appears as follows:



The short name for the selected driver appears in the name of the tab (in this case, PCL for the PCL-compatible HP driver).

The Configuration screen presents a scrollable list of configurable options for your printer driver. Currently supported options are Communications, Paper Size and Left Margin. By default these are set to Bluetooth, A4 paper size and zero margin, but you may adjust these values for your driver as follows:

Communications:

Currently supported communications options are Infrared and Bluetooth. Choose the option that matches your printer's wireless connection capability. Press the Select button to show a list of the options, and choose an option. Pressing the selection button again will set the option for the printer.

Paper Size:

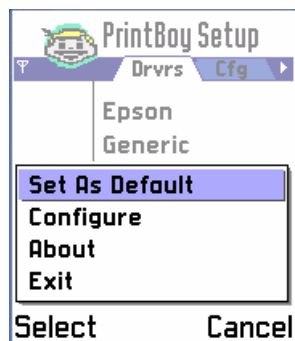
You can choose among A4, Legal and Letter paper sizes. Press the Select button to show a list of the options, and choose an option. Pressing the selection button again will set the option for the printer.

Left Margin:

You can choose among various left margin settings, ranging between 0" and 1.25". Press the Select button to show a list of the options, and choose an option. Pressing the selection button again will set the option for the printer.

Choosing Your Default Printer

The final step in configuring your printer driver is to set it as your Default Printer Driver. Doing this means that whenever you print, PrintBoy will not bother you with needing to continually select your printer – instead, PrintBoy will automatically use the same settings for your printer. Of course if you need to change your settings for a different printer, you can always do so by running Print Setup again.



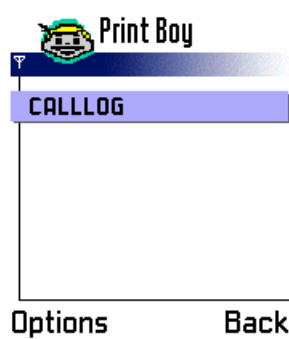
4. Printing with PrintBoy

This section describes how to use PrintBoy to print your files and data.

4.1. The PrintBoy Application

The PrintBoy main screen provides you with a list of printable file types and data types that you can access and print from your Series 60 smartphone. You can also access Print Setup from the Options menu within the main screen.

The main PrintBoy screen is pictured below:



The PrintBoy "Shell"

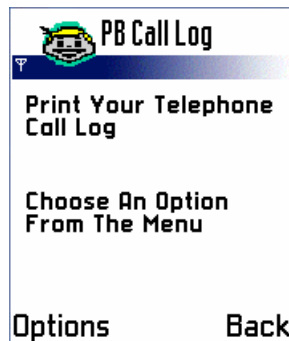
The main screen consists of:

- A list of installed PrintBoy Plug-Ins
- A Setup button for launching the Print Setup utility

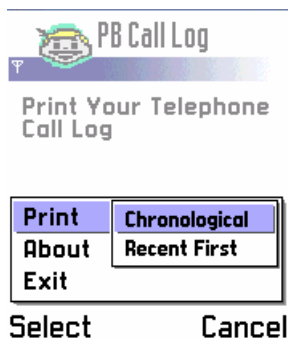
Each Plug-In listed on the main screen represents a kind of information you can print. Tapping on the description for a plug-in will launch the plug-in applet.

Printing your SmartPhone's Call Log

At present, PrintBoy for Series 60 supports printing of your Smartphone's Call Log. You can print your Call Log by selecting the Call Log entry in the list and pressing the OK selection button. This brings you to the Call Log screen (shown below):



From here you can choose to print your Call Log entries in either ascending chronological, or reverse chronological order (recent calls first) by choosing the Options menu, then the Print menu.



Printing Documents, Spreadsheets and Presentations with QuickOffice

Besides printing your Call Log, PrintBoy can also print Word documents, Excel spreadsheets and PowerPoint presentations that are stored on your phone (either as email attachments or residing on your phone's memory).

In order to print these file types, you will need to have a compatible Word, Excel, or PowerPoint viewer on your smartphone. PrintBoy currently supports the QuickOffice application suite from iGo (Mobility Electronics). QuickOffice is now bundled with several Series 60 smartphones, or you can obtain a copy of QuickOffice by visiting the iGo web site at <http://www.quickoffice.com>.

Since PrintBoy is integrated with QuickOffice, when you use QuickOffice, you can invoke printing from within the QuickOffice application while you are viewing your documents. Simply choose the Print Menu while viewing the file you wish to print, and QuickOffice will automatically load and run PrintBoy, and request that it print the current document.

5. Technical Support

5.1. Obtaining Technical Support

If you have a question that is not answered in this manual, please visit our online Support area at www.bachmannsoftware.com.

On our support page you will find information on how to subscribe to our active PrintBoy user group, answers to Frequently Asked Questions (FAQ's) and our printer compatibility matrix. If these information sources do not provide the information you need, please e-mail your support question to support@bachmannsoftware.com. We make every effort to reply to support questions within one business day.

When e-mail us for technical support, we appreciate it if you provide us with the following information:

- Your printer manufacturer and model number
- The default printer driver you are using
- Communications settings (IR, network, Bluetooth and the speed, etc)
- Which PrintBoy applet you are using
- What version of the PrintBoy applet you are using
- A detailed description of the problem

We thank you for your help and patience!

6. Integration with Other Series 60 Applications: Launching PrintBoy from other Series 60 Applications

Third party software applications can now add PrintBoy Series 60 printing support easily! We offer a variety of printing API's in our PrintBoy SDK. For more information on how to integrate printing with your application, please contact us at support@bachmannsoftware.com

