

D-Link DUB-A2

USB 2.0 2-Port PCI Adapter

This Installation Guide includes instructions for:

- Windows XP
- Windows 2000
- Windows Me
- Windows 98/98SE



Installation Guide Contents:

Section 1: Installing the DUB-A2 into your PC

Section 2: Windows XP Driver Installation

Section 3: Windows 2000 Driver Installation

Section 4: Windows Me Driver Installation

Section 5: Windows 98/98SE Driver Installation

Section 6: Hardware Diagram

Section 7: Technical Support

Package Contents:

Verify that your D-Link DUB-A2 package contains the following items. If any items are missing, please contact your reseller.

- D-Link DUB-A2 Hi-Speed USB 2.0 2-Port PCI Adapter
- This Installation Guide
- CD with Drivers and PDF version of Installation Guide

Minimum System Requirements:

For proper usage, you must have at least the following...

- Pentium 233-MHz or faster or equivalent with 32MB RAM
- One Available PCI Slot on your Motherboard
- Windows XP, 2000, Me, 98, 98 SE

1

Installing the DUB-A2 into your PC



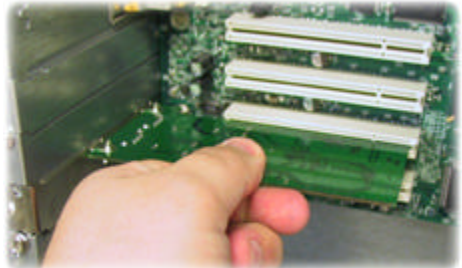
Opening the case of your computer may compromise the warranty of your computer. Consult the manufacturer of your computer before opening the case to ensure that you adhere to warranty guidelines. In some cases, the DUB-A2 may need to be installed by your computer manufacturer.

- A. Turn off** your computer and **unplug the power cord**.
- B. Remove** the outer cover of your computer.
(Refer to your computers manual if needed.)
- C. Locate** an available **PCI slot**. (usually white or cream colored)
- D. Remove** the **backplate**.

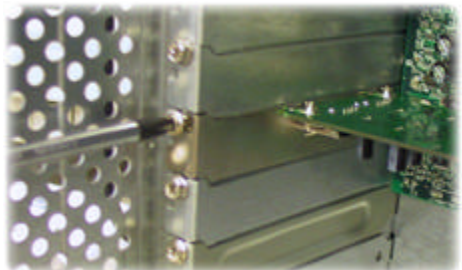
(The small piece of metal that covers the opening for the PCI card).



- E. Insert** the DUB-A2 carefully into the PCI slot.



- F. Secure** the DUB-A2 with the screw from the backplate.
- G. Replace** your computer's cover.
- H. Plug in** the **power cord** and **turn on** your computer.



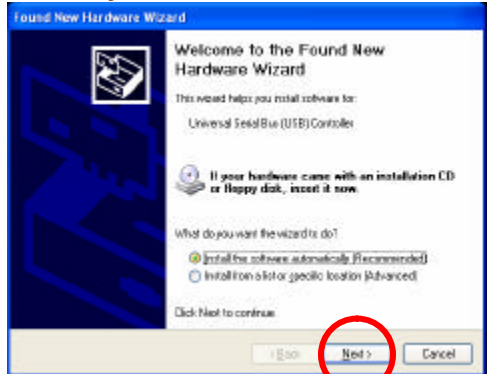
- I. Please refer** to the following section that corresponds with the operating system that you are using.

2

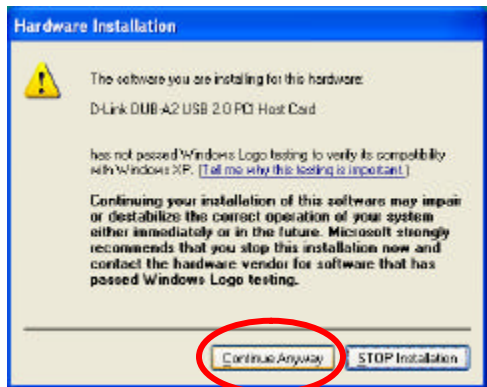
Windows XP Driver Installation

A. Insert the DUB-A2 Driver CD into your CD-ROM drive.

B. Select “Next”.

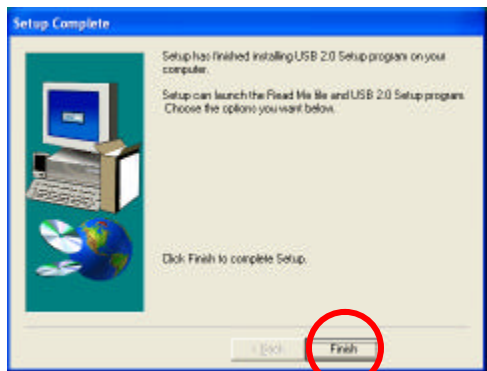


C. Select “Continue Anyway”.



D. Select “Finish”.

E. Windows will continue to load drivers for the Root Hub. Once completed, you will be able to connect USB devices to your DUB-A2.

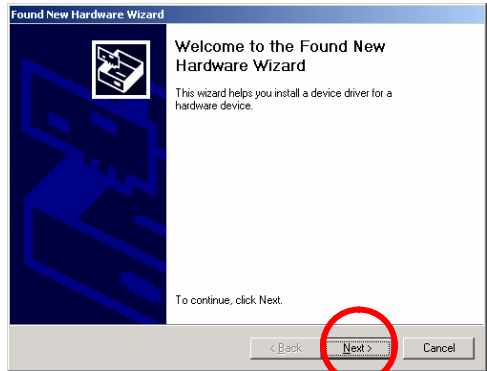


3

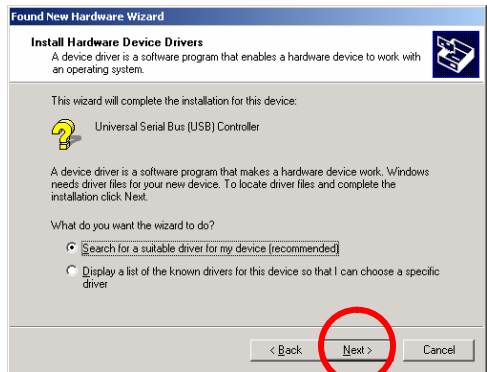
Windows 2000 Driver Installation

A. Insert the DUB-A2 Driver CD into your CD-ROM drive.

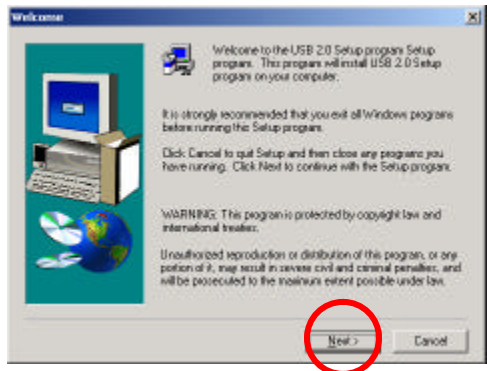
B. Select “Next”.



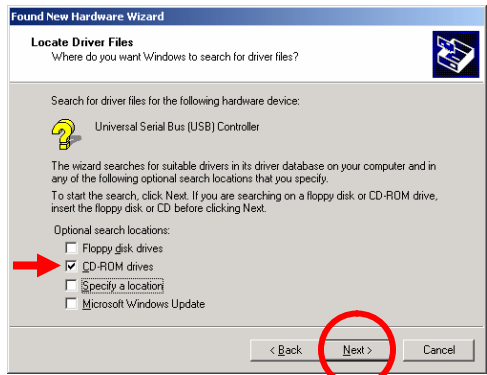
C. Select “Next”.



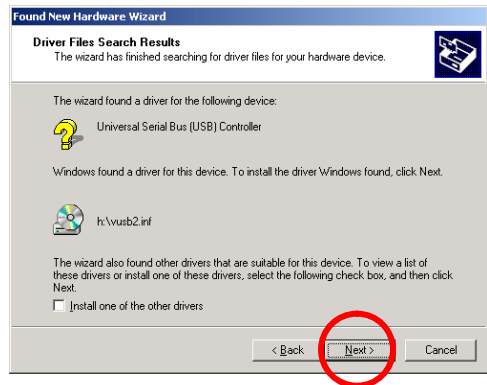
D. Select “Next”.



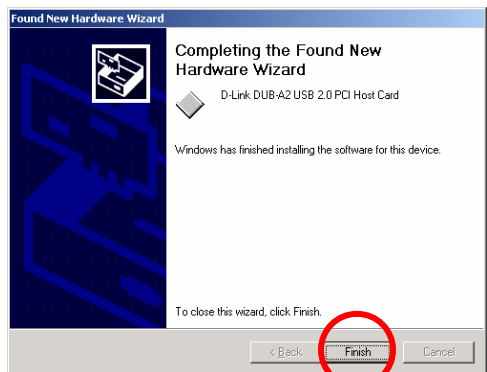
E. Make sure that “CD-ROM drives” is the only option selected and click “Next”.



F. Select “Next”.



G. Select “Finish” to complete the installation.

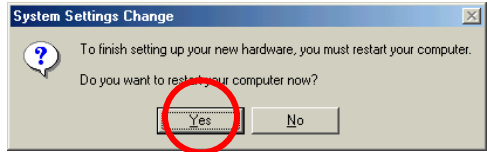


4

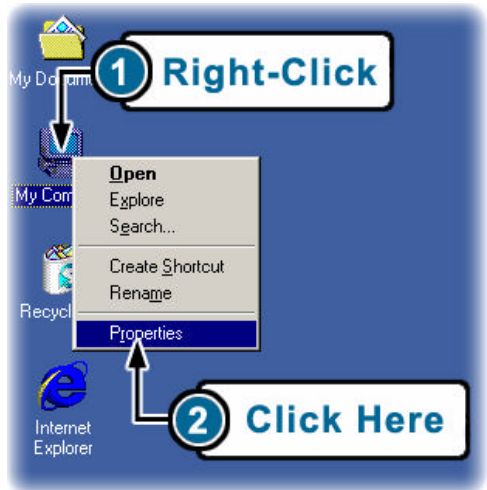
Windows Me Driver Installation

A. Insert the DUB-A2 Driver CD into your CD-ROM drive.

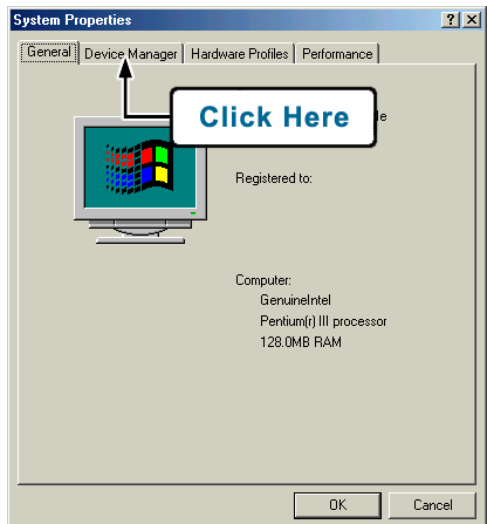
B. Windows will load drivers built-into the OS and ask you to restart your computer. Select “**Yes**”.




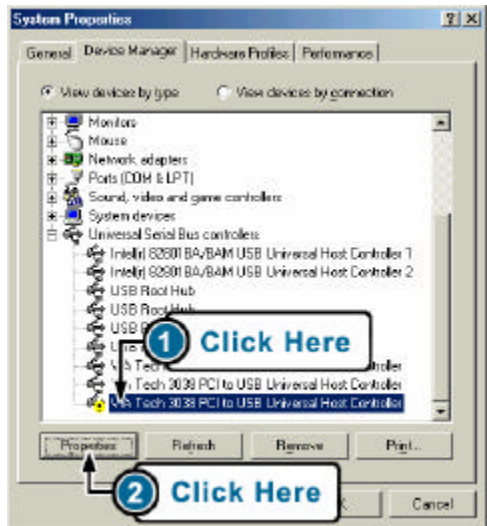
C. (1) Right-click on the My Computer Icon on the Windows desktop and (2) select “**Properties**”.



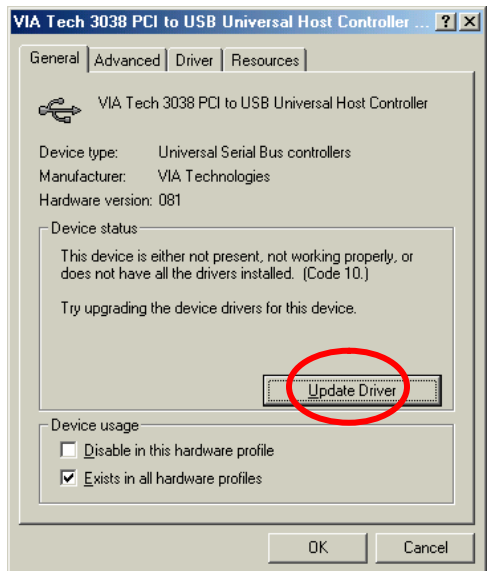
D. Select the “**Device Manager**” tab.



- E. (1) Select the “**VIA Tech...**” line that shows  next to it and (2) select “**Properties**”.



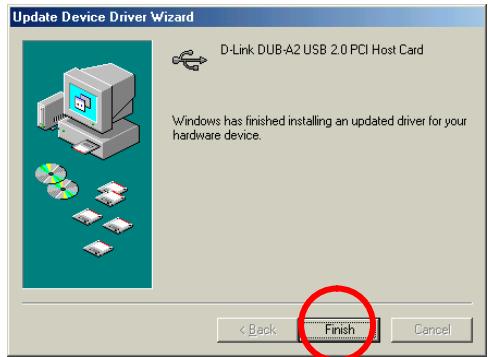
- F. Select “**Update Driver**”.



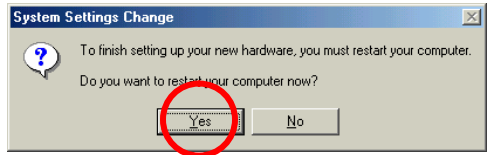
- G. Select “**Next**”.



H. Select **“Finish”**.



I. Select **“Yes”** to restart the computer and complete the installation.

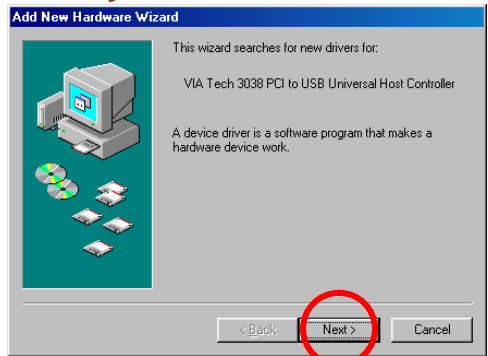


5

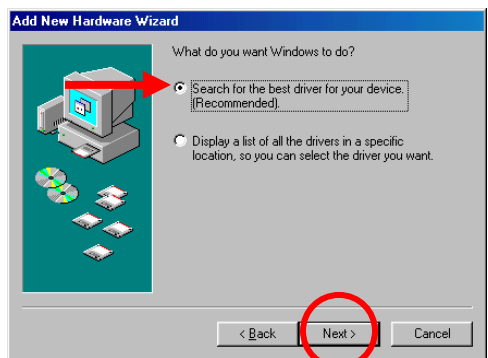
Windows 98/98SE Driver Installation

A. Insert the **DUB-A2 Driver CD** into your **CD-ROM** drive.

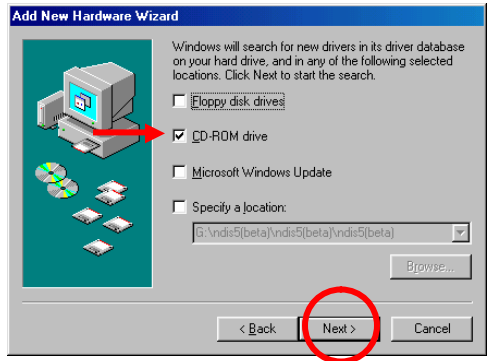
B. Select **“Next”**.



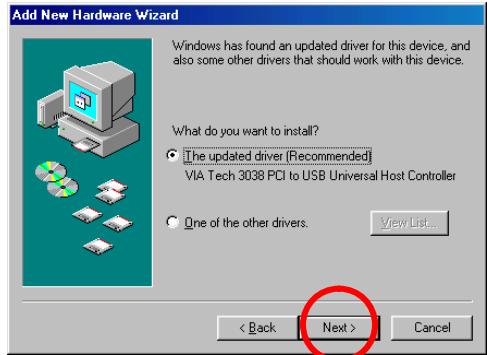
C. Select **“Search for the best driver from your device”** and click **“Next”**.



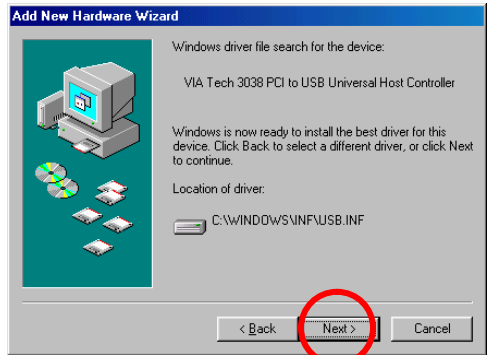
- D. Put a check next to “**CD-ROM drive**” and uncheck all other options and select “**Next**”.



- E. Select “**Next**”.

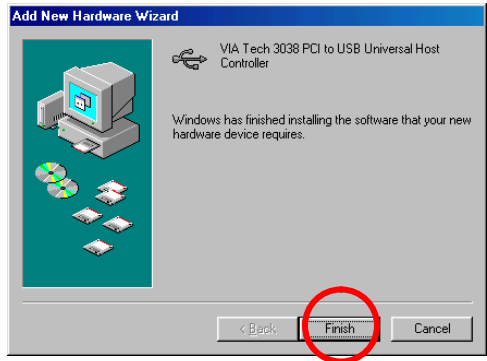


- F. Select “**Next**”.



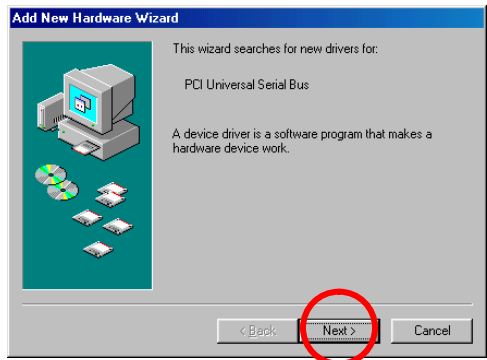
- G. If prompted for the Windows 98 CD, **insert the Windows 98 CD** into the CD-ROM drive and click “**OK**”.
- H. Specify the correct location of the Windows 98 setup files in the “**Copy files from:**” box. If the CD-ROM drive is the “D:” drive, then type “D:\Win98” in the box. **Note:** Some computers will have these files in the “C:\Windows\options\cabs\” directory. After typing in the location, click **OK**. Windows will copy the necessary files.

I. Select **“Finish”**.

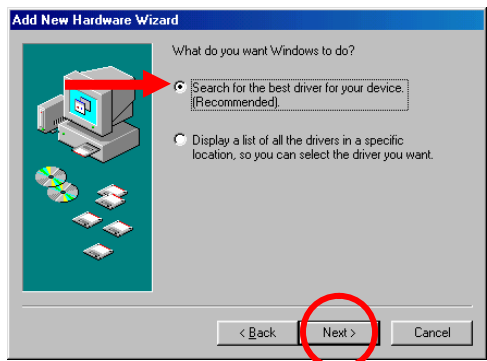


J. Repeat steps B through I one more time. (Windows 98 requires that this driver be installed twice in order to support USB 2.)

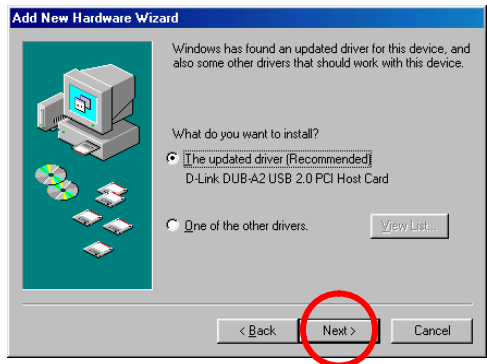
K. Select **“Next”**.



L. Select **“Next”**.



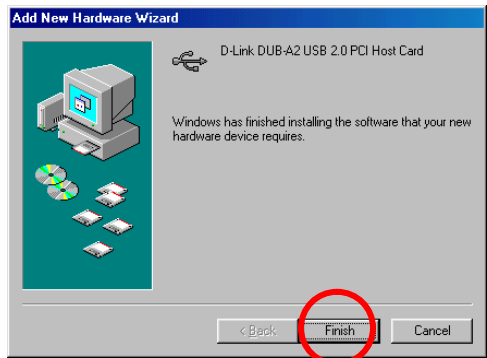
M. Select “Next”.



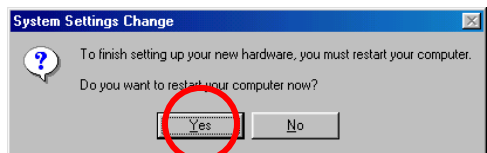
N. Select “Next”.



O. Select “Finish”.



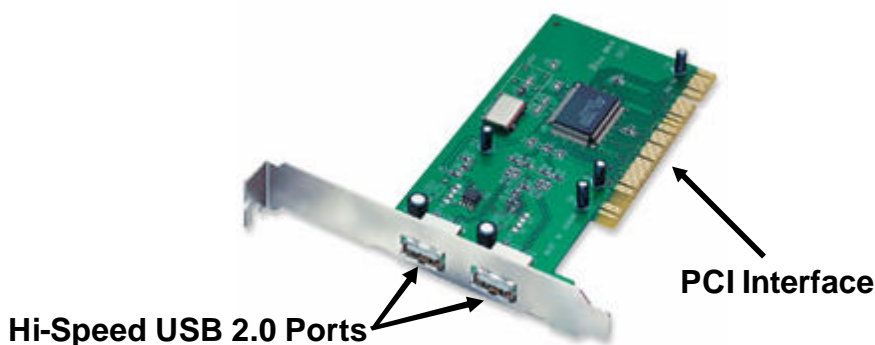
P. Windows may ask you to restart your computer. Click “Yes” to restart your computer to complete the installation.



6

Hardware Diagram

The DUB-A2 is designed to fit into a PCI slot on your computers motherboard. Refer to the diagram below for feature layout.



7

Technical Support

D-Link provides free technical support for customers within the United States during the warranty period. U.S. customers can contact D-Link Technical Support through our web site, e-mail or by phone.

D-Link Technical Support over Telephone :

- (877) 45D-LINK or (877) 453-5465
- 24 hours a day, seven days a week

D-Link Technical Support over the Internet:

- <http://support.dlink.com>
- support@dlink.com