

D-Link Quick Installation Guide

This product can be used with:
Windows XP, Me, 2000,
98 Second Edition



DSB-C110
D-Link VisualStream™
100K Pixel USB PC Camera

Before You Begin

You must have at least the following:

- Windows XP/Me/2000/98 Second Edition
- One available USB Port
- CD-ROM Drive

Check Your Package Contents

These are the items included with your purchase:

If any of the below items are missing, please contact your reseller.



• **DSB-C110 USB PC Camera**



• **CD-ROM**
(containing Drivers, PDF Installation Guide,
PDF Manual, and Warranty)



Run the Driver CD before you install the PC Camera. The Driver CD contains an installation program that simplifies your installation process.

1 Insert the D-Link CD-ROM Into Your Computer

Turn on your computer and Insert the D-Link VisualStream™ DSB-C110 Driver CD in the CD-ROM drive.



Do **NOT** install the PC Camera into your PC before installing the driver software on the D-Link CD!

Click **Install D-Link CIF Webcam**

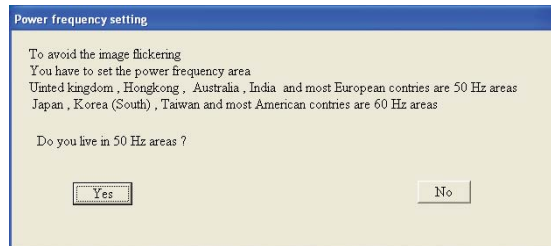


If the Autorun screen does not automatically start, click on **Start > Run**, enter "**D:\Autorun.exe**" and click **OK**. "D" represents the letter of your CD-ROM drive. Replace it if your CD-ROM drive is a different letter.

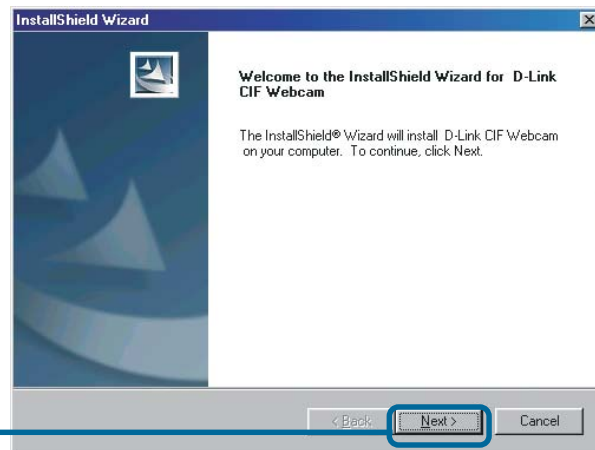
Choose **Install D-Link CIF WebCam For Windows** for your Operating System



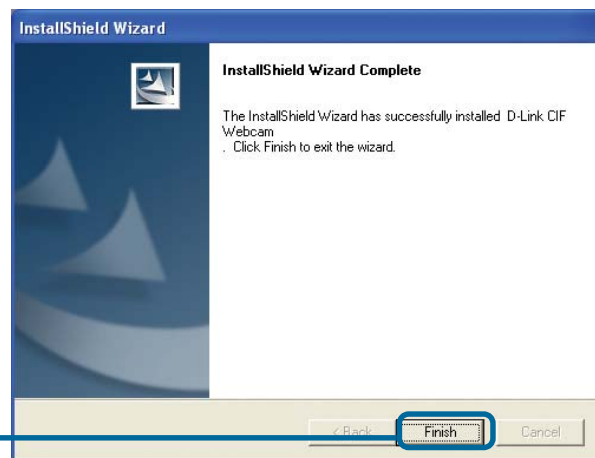
You may see this screen during the installation. Please select the appropriate power frequency corresponding to your geographic area.



Click **Next**



Click **Finish**



2

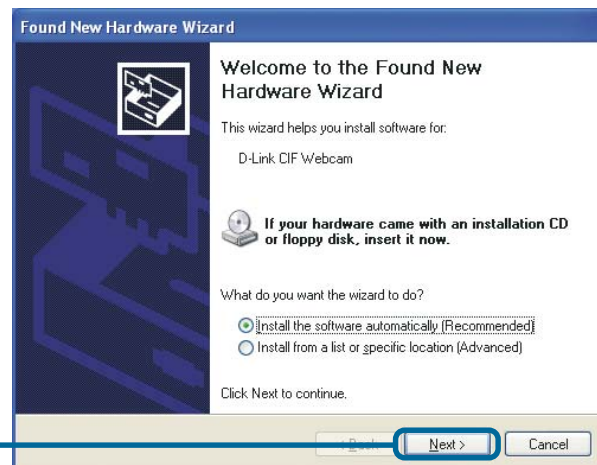
Connect the Camera To Your Windows-based Computer

With your computer ON, **Connect the PC Camera** to an available USB port on your USB host adapter or USB hub. (You may also use a USB extension cable for easy access)

Windows XP Users

Follow these steps to complete installation in Windows XP.

Click **Next**



Click **Continue Anyway**





Windows 2000 & Me Users

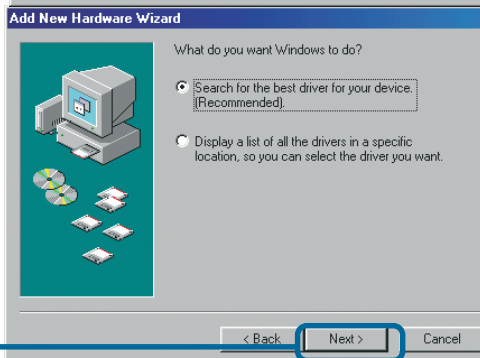
The DSB-C110 driver installation will proceed automatically for Windows 2000 & Me users.

Windows 98SE Users

Click **Next**



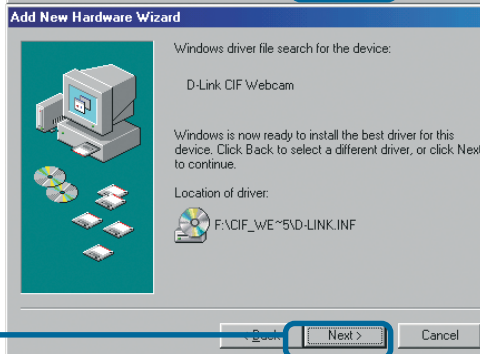
Click **Next**

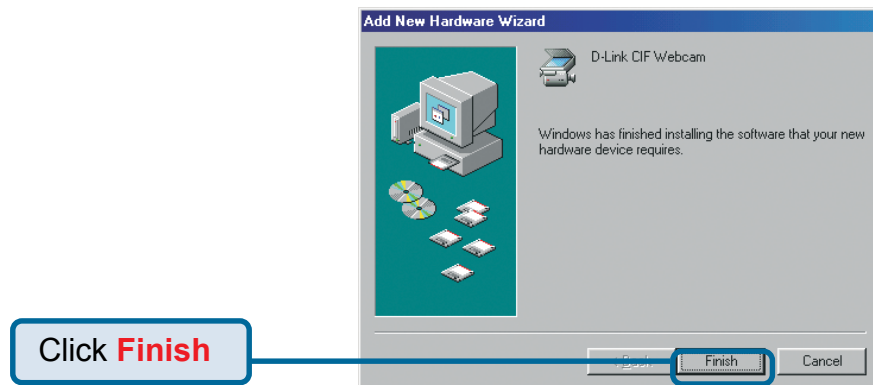


Click **Next**

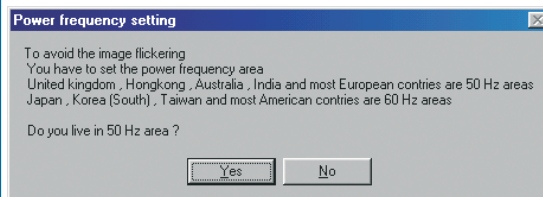


Click **Next**





You may see this screen during the installation. Please select the appropriate power frequency corresponding to your geographic area.



3 The Installation is Complete!

Once properly installed, you are ready to start immediately capturing images and creating video with the DSB-C110.

Please refer to the DSB-C110 Manual on the CD included with this product for information on how to install and use the ArcSoft VideoImpression and ArcSoft PhotoImpression software.

Technical Support

You can find the most recent software and user documentation on the **D-Link** website.

D-Link provides free technical support for customers within the United States for the duration of the warranty period on this product.

U.S. customers can contact **D-Link** technical support through our web site or by phone.

D-Link Technical Support over the Telephone:

(877) 45D-LINK

(877) 453-5465

24 hours a day, seven days a week

D-Link Technical Support over the Internet:

<http://support.dlink.com>

email: support@dlink.com

