



DRW-100U  
USB CD-R/RW  
User's Manual

---

Rev. 10132004w

---

Printed In Taiwan

## LIMITED WARRANTY

D-Link Systems, Inc. ("D-Link") provides this limited warranty for its product only to the person or entity who originally purchased the product from D-Link or its authorized reseller or distributor.

**Limited Hardware Warranty:** D-Link warrants that the hardware portion of the D-Link products described below ("Hardware") will be free from material defects in workmanship and materials from the date of original retail purchase of the Hardware, for the period set forth below applicable to the product type ("Warranty Period") if the Hardware is used and serviced in accordance with applicable documentation; provided that a completed Registration Card is returned to an Authorized D-Link Service Office within ninety (90) days after the date of original retail purchase of the Hardware. If a completed Registration Card is not received by an authorized D-Link Service Office within such ninety (90) period, then the Warranty Period shall be ninety (90) days from the date of purchase.

<i>Product Type</i>	<i>Warranty Period</i>
Product (excluding power supplies and fans), if purchased and delivered in the fifty (50) United States, or the District of Columbia ("USA")	As long as the original purchaser still owns the product
Product purchased or delivered outside the USA	One (1) Year
Power Supplies and Fans	One (1) Year
Spare parts and spare kits	Ninety (90) days

D-Link's sole obligation shall be to repair or replace the defective Hardware at no charge to the original owner. Such repair or replacement will be rendered by D-Link at an Authorized D-Link Service Office. The replacement Hardware need not be new or of an identical make, model or part; D-Link may in its discretion may replace the defective Hardware (or any part thereof) with any reconditioned product that D-Link reasonably determines is substantially equivalent (or superior) in all material respects to the defective Hardware. The Warranty Period shall extend for an additional ninety (90) days after any repaired or replaced Hardware is delivered. If a material defect is incapable of correction, or if D-Link determines in its sole discretion that it is not practical to repair or replace the defective Hardware, the price paid by the original purchaser for the defective Hardware will be refunded by D-Link upon return to D-Link of the defective Hardware. All Hardware (or part thereof) that is replaced by D-Link, or for which the purchase price is refunded, shall become the property of D-Link upon replacement or refund.

**Limited Software Warranty:** D-Link warrants that the software portion of the product ("Software") will substantially conform to D-Link's then current functional specifications for the Software, as set forth in the applicable documentation, from the date of original delivery of the Software for a period of ninety (90)

days ("Warranty Period"), if the Software is properly installed on approved hardware and operated as contemplated in its documentation. D-Link further warrants that, during the Warranty Period, the magnetic media on which D-Link delivers the Software will be free of physical defects. D-Link's sole obligation shall be to replace the non-conforming Software (or defective media) with software that substantially conforms to D-Link's functional specifications for the Software. Except as otherwise agreed by D-Link in writing, the replacement Software is provided only to the original licensee, and is subject to the terms and conditions of the license granted by D-Link for the Software. The Warranty Period shall extend for an additional ninety (90) days after any replacement Software is delivered. If a material non-conformance is incapable of correction, or if D-Link determines in its sole discretion that it is not practical to replace the non-conforming Software, the price paid by the original licensee for the non-conforming Software will be refunded by D-Link; provided that the non-conforming Software (and all copies thereof) is first returned to D-Link. The license granted respecting any Software for which a refund is given automatically terminates.

***What You Must Do For Warranty Service:***

Registration Card. The Registration Card provided at the back of this manual must be completed and returned to an Authorized D-Link Service Office for each D-Link product within ninety (90) days after the product is purchased and/or licensed. The addresses/telephone/fax list of the nearest Authorized D-Link Service Office is provided in the back of this manual. FAILURE TO PROPERLY COMPLETE AND TIMELY RETURN THE REGISTRATION CARD MAY AFFECT THE WARRANTY FOR THIS PRODUCT.

Submitting A Claim. Any claim under this limited warranty must be submitted in writing before the end of the Warranty Period to an Authorized D-Link Service Office. The claim must include a written description of the Hardware defect or Software nonconformance in sufficient detail to allow D-Link to confirm the same. The original product owner must obtain a Return Material Authorization (RMA) number from the Authorized D-Link Service Office and, if requested, provide written proof of purchase of the product (such as a copy of the dated purchase invoice for the product) before the warranty service is provided. After an RMA number is issued, the defective product must be packaged securely in the original or other suitable shipping package to ensure that it will not be damaged in transit, and the RMA number must be prominently marked on the outside of the package. The packaged product shall be insured and shipped to D-Link, 53 Discovery Drive, Irvine CA 92618, with all shipping costs prepaid. D-Link may reject or return any product that is not packaged and shipped in strict compliance with the foregoing requirements, or for which an RMA number is not visible from the outside of the package. The product owner agrees to pay D-Link's reasonable handling and return shipping charges for any product that is not packaged and shipped in accordance with the foregoing requirements, or that is determined by D-Link not to be defective or non-conforming.

***What Is Not Covered:***

This limited warranty provided by D-Link does not cover:

Products that have been subjected to abuse, accident, alteration, modification, tampering, negligence, misuse, faulty installation, lack of reasonable care, repair or service in any way that is not contemplated in the documentation for the product, or if the model or serial number has been altered, tampered with, defaced or removed;

Initial installation, installation and removal of the product for repair, and shipping costs;

Operational adjustments covered in the operating manual for the product, and normal maintenance;

Damage that occurs in shipment, due to act of God, failures due to power surge, and cosmetic damage; and

Any hardware, software, firmware or other products or services provided by anyone other than D-Link.

***Disclaimer of Other Warranties:*** EXCEPT FOR THE LIMITED WARRANTY SPECIFIED HEREIN, THE PRODUCT IS PROVIDED “AS-IS” WITHOUT ANY WARRANTY OF ANY KIND INCLUDING, WITHOUT LIMITATION, ANY WARRANTY OF MERCHANTABILITY, FITNESS FOR A PARTICULAR PURPOSE AND NON-INFRINGEMENT. IF ANY IMPLIED WARRANTY CANNOT BE DISCLAIMED IN ANY TERRITORY WHERE A PRODUCT IS SOLD, THE DURATION OF SUCH IMPLIED WARRANTY SHALL BE LIMITED TO NINETY (90) DAYS. EXCEPT AS EXPRESSLY COVERED UNDER THE LIMITED WARRANTY PROVIDED HEREIN, THE ENTIRE RISK AS TO THE QUALITY, SELECTION AND PERFORMANCE OF THE PRODUCT IS WITH THE PURCHASER OF THE PRODUCT.

***Limitation of Liability:*** TO THE MAXIMUM EXTENT PERMITTED BY LAW, D-LINK IS NOT LIABLE UNDER ANY CONTRACT, NEGLIGENCE, STRICT LIABILITY OR OTHER LEGAL OR EQUITABLE THEORY FOR ANY LOSS OF USE OF THE PRODUCT, INCONVENIENCE OR DAMAGES OF ANY CHARACTER, WHETHER DIRECT, SPECIAL, INCIDENTAL OR CONSEQUENTIAL (INCLUDING, BUT NOT LIMITED TO, DAMAGES FOR LOSS OF GOODWILL, WORK STOPPAGE, COMPUTER FAILURE OR MALFUNCTION, LOSS OF INFORMATION OR DATA CONTAINED IN, STORED ON, OR INTEGRATED WITH ANY PRODUCT RETURNED TO D-LINK FOR WARRANTY SERVICE) RESULTING FROM THE USE OF THE PRODUCT, RELATING TO WARRANTY SERVICE, OR ARISING OUT OF ANY BREACH OF THIS LIMITED WARRANTY, EVEN IF D-LINK HAS BEEN ADVISED OF THE POSSIBILITY OF SUCH DAMAGES. THE SOLE REMEDY FOR A BREACH OF THE FOREGOING LIMITED WARRANTY IS REPAIR, REPLACEMENT OR REFUND OF THE DEFECTIVE OR NON-CONFORMING PRODUCT.

***GOVERNING LAW:*** This Limited Warranty shall be governed by the laws of the state of California.

Some states do not allow exclusion or limitation of incidental or consequential damages, or limitations on how

long an implied warranty lasts, so the foregoing limitations and exclusions may not apply. This limited warranty provides specific legal rights and the product owner may also have other rights which vary from state to state.

## **Trademarks**

Copyright ©1999 D-Link Corporation. Contents subject to change without prior notice. D-Link is a registered trademark of D-Link Corporation/D-Link Systems, Inc. All other trademarks belong to their respective proprietors.

## **Copyright Statement**

No part of this publication may be reproduced in any form or by any means or used to make any derivative such as translation, transformation, or adaptation without permission from D-Link Corporation/D-Link Systems Inc., as stipulated by the United States Copyright Act of 1976.

## **CE Mark Warning**

This is a Class B product. In a domestic environment, this product may cause radio interference, in which case the user may be required to take adequate measures

## **Warnung!**

Dies ist in Produkt der Klasse B. Im Wohnbereich kann dieses Produkt Funkstoerungen verursachen. In diesem Fall kann vom Benutzer verlangt werden, angemessene Massnahmen zu ergreifen.

## **Advertencia de Marca de la CE**

Este es un producto de Clase B. En un entorno doméstico, puede causar interferencias de radio, en cuyo case, puede requerirse al usuario para que adopte las medidas adecuadas.

## **Attention!**

Ceci est un produit de classe B. Dans un environnement domestique, ce produit pourrait causer des interférences radio, auquel cas l'utilisateur devrait prendre les mesures adéquates.

## **Attenzione!**

Il presente prodotto appartiene alla classe B. Se utilizzato in ambiente domestico il prodotto può causare interferenze radio, nel cui caso è possibile che l'utente debba assumere provvedimenti adeguati.

## **FCC Warning**

This equipment has been tested and found to comply with the limits for a Class B digital device, pursuant to part 15 of the FCC Rules. These limits are designed to provide reasonable protection against harmful

interference in a residential installation. This equipment generates, uses and can radiate radio frequency energy and, if not installed and used in accordance with the instructions, may cause harmful interference to radio communications. However, there is no guarantee that interference will not occur in a particular installation. If this equipment does cause harmful interference to radio or television reception, which can be determined by turning the equipment off and on, the user is encouraged to try to correct the interference by one or more of the following measures:

- Reorient or relocate the receiving antenna.
- Increase the separation between the equipment and receiver.
- Connect the equipment into an outlet on a circuit different from that to which the receiver is connected.
- Consult the dealer or an experienced radio/ TV technician for help.

## VCCI Warning

この装置は、情報処理装置等電波障害自主規制協議会（V C C I）の基準に基づくクラス B 情報技術装置です。この装置は、家庭環境で使用することを目的としています。この装置がラジオやテレビジョン受信機に近接して使用されると、受信障害を引き起こすことがあります。  
取扱説明書に従って正しい取り扱いをして下さい。

**\* Caution - Use of controls or adjustments or performance of procedures other than those specified herein may result in hazardous radiation exposure.**

**Contents**

---

INTRODUCTION.....1

FEATURE LAYOUT.....1

HARDWARE INSTALLATION.....3

SOFTWARE INSTALLATION .....6

SPECIFICATION AND FEATURES.....12

## Introduction

---

Congratulations on your purchases of the D-Link CD-R/RW. Your CD-R/RW allows you to read, write, and rewrite data at 6x/4x /4x speeds. This guide will explain the features and functions of the CD-R/RW to help you store important data and information.

The DRW-100U is a CD-R/RW, which uses USB (Universal Serial Bus) interface and provides Plug and Play installation. This User's Guide will help you to install and use this CD-R/RW correctly.

## Feature Layout

---

- **USB Cable/Connector**  
There are two plugs, A and B (Figure 1). Plug A connects to the PC or NB USB port (Figure 3). Plug B connects to the CD-R/RW USB port (Figure 2).
- **Headphone Jack (Figure 4-2)**  
Used to connect headphones, or speakers.
- **Busy Indicator (Figure 4-3)**  
The indicator is green when the power is on and orange when the CD R/RW is working.
- **Button (Figure 4-4)**  
Push the button in order to open it. The button will be locked when the CD-R/RW is working. When the Busy Indicator is orange, don't push the eject button.
- **Volume Control (Figure 4-5)**  
This controls the volume for the headphones.
- **Chuck (Figure 4-6)**



This holds the 8cm and 12cm discs in place.

- Pick Up Head (Figure 4-7)  
**Don't touch the Pick Up Head** or look at it directly when the power is on.
- Power Input (Figure 5-8)  
Please only use the power adapter enclosed with the product.  
Using an unsuitable power adapter may cause unrecoverable damages to the CD-RW drive.
- Power Switch (Figure 5-9)  
Please turn on the power before connecting the USB Cable.

## Hardware Installation

---

This section will cover the steps for installing the CD-R/RW. Follow these steps in order.

1. Connect the power adapter plug to the CD-R/RW and turn on the power switch (Figure 5-9).
2. Turn on the computer to make sure the operating system has started.
3. With the cables provided, insert plug B into the CD-R/RW USB port as shown below in Figure 2.
4. To connect the CD-R/RW to the computer, insert plug A into the PC or NB USB port as shown in Figure 3.



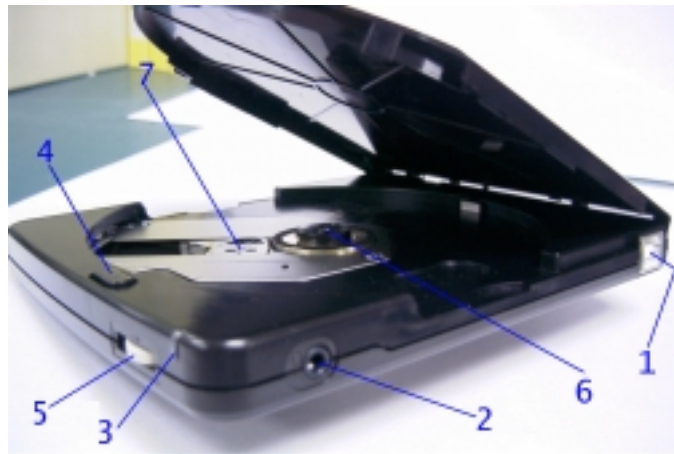
(Figure 1)



**(Figure 2)**



**(Figure 3)**



(Figure 4)

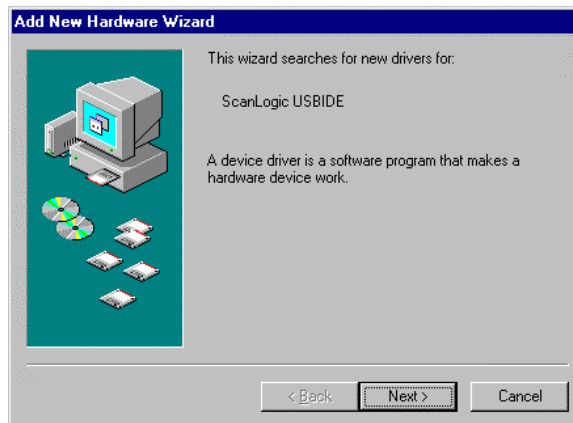


(Figure 5)

## Software Installation

---

1. Windows will detect the existence of USB CD-R/RW hardware automatically and will ask you for the drivers. Please follow the steps as below:



Click on **Next**



Click on **Next**



Insert the diskette of device driver, specify A:\,  
then Click on **Next**



Click on **Next**. The system will copy files automatically.

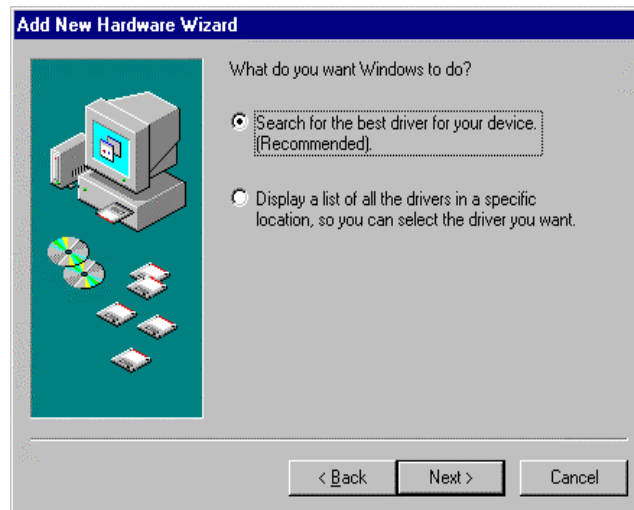


Click on **Finish**

5. After the USB-to-IDE bridge device driver has installed, Windows will detect the CD-RW drive. Please follow the steps as below to install the device driver:



Click on **Next**



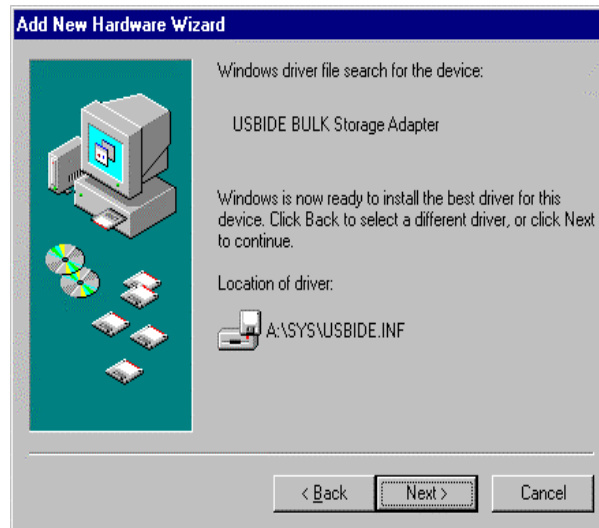
Click on **Next**



Insert the diskette of device driver, specify A:\,

then click on **Next**



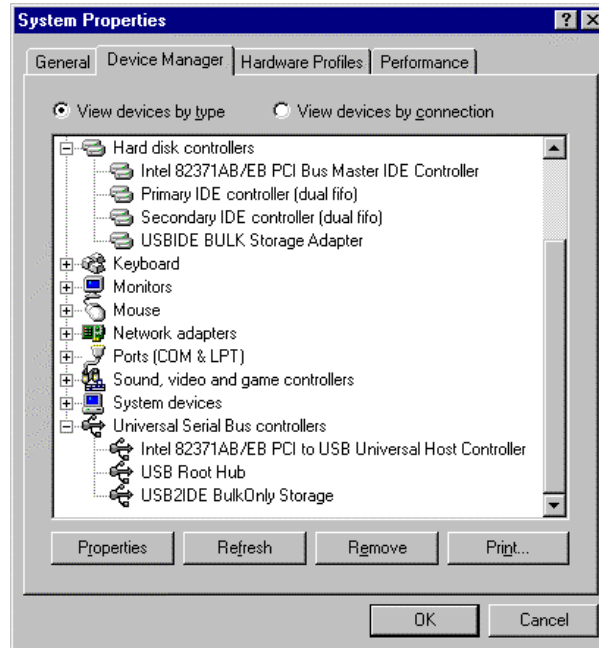


Click on **Next**



Click on **Finish**

6. After installing process being completed, then you can see the device drivers were shown on the "System Property".



## Specification and Features

---

1. Support 12 cm, 8 cm disk read and, 12 cm disk write.
2. 6x read, 4x CD-R writes 600 KB/Sec. and, 4x CD-RW rewrites 600 KB/Sec.
3. Random access time < 220 ms.
4. Voltage: DC + 5V $\pm$ 5%.
5. USB Interface (compliant to USB 1.1).
6. Support disk write modes: DAO, SAO, TAO, Variable Packet Writing and, Fixed Packet Writing.
7. Support disk formats: CD-Digital Audio, CD-ROM, Mode 1, Mode 2, CD-ROM XA, Mode 2 Form 1, Mode 2 Form2, CD-I, Mode 2 Form 1, Mode 2 Form2, CD-I Ready, Photo CD, Video CD, CD-TEXT, and CD EXTRA
8. Compatible with Windows 98, Windows ME and Windows 2000.
9. Clamshell type manual load.
10. Lock mechanism for protecting write operation.
11. Rotary volume control for headphone audio output.
12. Power-Saving feature.

# D-Link® Offices

<b>AUSTRALIA</b>	<b>D-LINK AUSTRALASIA</b> Unit 16, 390 Eastern Valley Way, Roseville, NSW 2069, Australia TEL: 61-2-9417-7100 FAX: 61-2-9417-1077 TOLL FREE: 1800-177-100 (Australia), 0800-900900 (New Zealand) URL: www.dlink.com.au E-MAIL: support@dlink.com.au, info@dlink.com.au
<b>CANADA</b>	<b>D-LINK CANADA</b> 2180 Winston Park Drive, Oakville, Ontario L6H 5W1 Canada TEL: 1-905-829-5033 FAX: 1-905-829-5095 BBS: 1-965-279-8732 FREE CALL: 1-800-354-6522 URL: www.dlink.ca E-MAIL: techsup@dlink.ca
<b>CHILE</b>	<b>D-LINK SOUTH AMERICA</b> Isidora Goyenechea #2934 of.702, Las Condes, Santiago, Chile TEL: 56-2-232-3185 FAX: 56-2-2320923 URL: www.dlink.cl
<b>CHINA</b>	<b>D-LINK CHINA</b> 2F., Sigma Building, 49 Zhichun Road, Haidian District, 100080 Beijing, China TEL: 86-10-88097777 FAX: 86-10-88096789 URL: www.dlink.com.cn
<b>DENMARK</b>	<b>D-LINK DENMARK</b> Naverland 2, DK-2600 Glostrup, Copenhagen, Denmark TEL: 45-43-969040 FAX: 45-43-424347 URL: www.dlink.dk E-MAIL: info@dlink.dk
<b>EGYPT</b>	<b>D-LINK MIDDLE EAST</b> 7 Assem Ebn Sabet Street, Heliopolis Cairo, Egypt TEL: 202-2456176 FAX: 202-2456192 URL: www.dlink-me.com E-MAIL: support@dlink-me.com
<b>FRANCE</b>	<b>D-LINK FRANCE</b> Le Florilege #2, Allée de la Fresnerie 78330 Fontenay Le Fleury France TEL: 33-1-30238688 FAX: 33-1-3023-8689 URL: www.dlink-france.fr E-MAIL: info@dlink-france.fr
<b>GERMANY</b>	<b>D-LINK Central Europe/D-Link Deutschland GmbH</b> Schwalbacher Str. e74 65760 Eschborn, Germany TEL: 49-6196-77990 FAX: 49-6196-7799300 URL: www.dlink.de BBS: 49-(0)6192-971199 (Analog) 49-(0)6192-971198 (ISDN) INFO LINE: 00800-7250-0000 (toll free) HELP LINE: 00800-7250-4000 (toll free) REPAIR LINE: 00800-7250-8000
<b>INDIA</b>	<b>D-LINK INDIA</b> Plot No.5, Kurla-Bandra Complex Road, Off Cst Road, Santacruz (E), Bombay - 400 098 India TEL: 91-22-652-6696 FAX: 91-22-652-8914 URL: www.dlink-india.com E-MAIL: service@dlink.india.com
<b>ITALY</b>	<b>D-LINK MEDITERANEO SRL</b> Via Nino Bonnet No. 6/b, 20154 Milano, Italy TEL: 39-02-2900-0676 FAX: 39-02-2900-1723 URL: www.dlink.it E-MAIL: info@dlink.it
<b>JAPAN</b>	<b>D-LINK JAPAN</b> 10F, 8-8-15 Nishi-Gotanda, Shinagawa-ku, Tokyo 141 Japan TEL: 81-3-5434-9678 FAX: 81-3-5434-9868 URL: www.d-link.co.jp
<b>RUSSIA</b>	<b>D-LINK RUSSIA</b> Michurinski Prospekt 49, 117607 Moscow, Russia TEL: 7-095-737-3389, 7-095-737-3492 FAX: 7-095-737-3390
<b>SINGAPORE</b>	<b>D-LINK INTERNATIONAL</b> 1 International Business Park, #03-12 The Synergy, Singapore 609917 TEL: 65-774-6233 FAX: 65-774-6322 URL: www.dlink-intl.com E-MAIL: info@dlink.com.sg
<b>S. AFRICA</b>	<b>D-LINK SOUTH AFRICA</b> Unit 2, Parkside 86 Oak Avenue Highveld Technopark Centurion, Gauteng, Republic of South Africa TEL: 27(0)126652165 FAX: 27(0)126652186
<b>SWEDEN</b>	<b>D-LINK SWEDEN</b> P.O. Box 15036, S-167 15 Bromma Sweden TEL: 46-(0)8564-61900 FAX: 46-(0)8564-61901 E-MAIL: info@dlink.se URL: www.dlink.se
<b>TAIWAN</b>	<b>D-LINK TAIWAN</b> 2F, No. 119 Pao-Chung Road, Hsin-Tien, Taipei, Taiwan, TEL: 886-2-2910-2626 FAX: 886-2-2910-1515 URL: www.dlinktw.com.tw
<b>U.K.</b>	<b>D-LINK EUROPE</b> 4 <sup>th</sup> Floor, Merit House, Edgware Road, Colindale, London, NW9 5AB, U.K. TEL: 44-20-8731-5555 FAX: 44-20-8731-5511 URL: www.dlink.co.uk E-MAIL: info@dlink.co.uk
<b>U.S.A.</b>	<b>D-LINK U.S.A.</b> 53 Discovery Drive, Irvine, CA 92618 USA TEL: 1-949-788-0805 FAX: 1-949-753-7033 INFO LINE: 1-800-326-1688 BBS: 1-949-455-1779, 1-949-455-9616