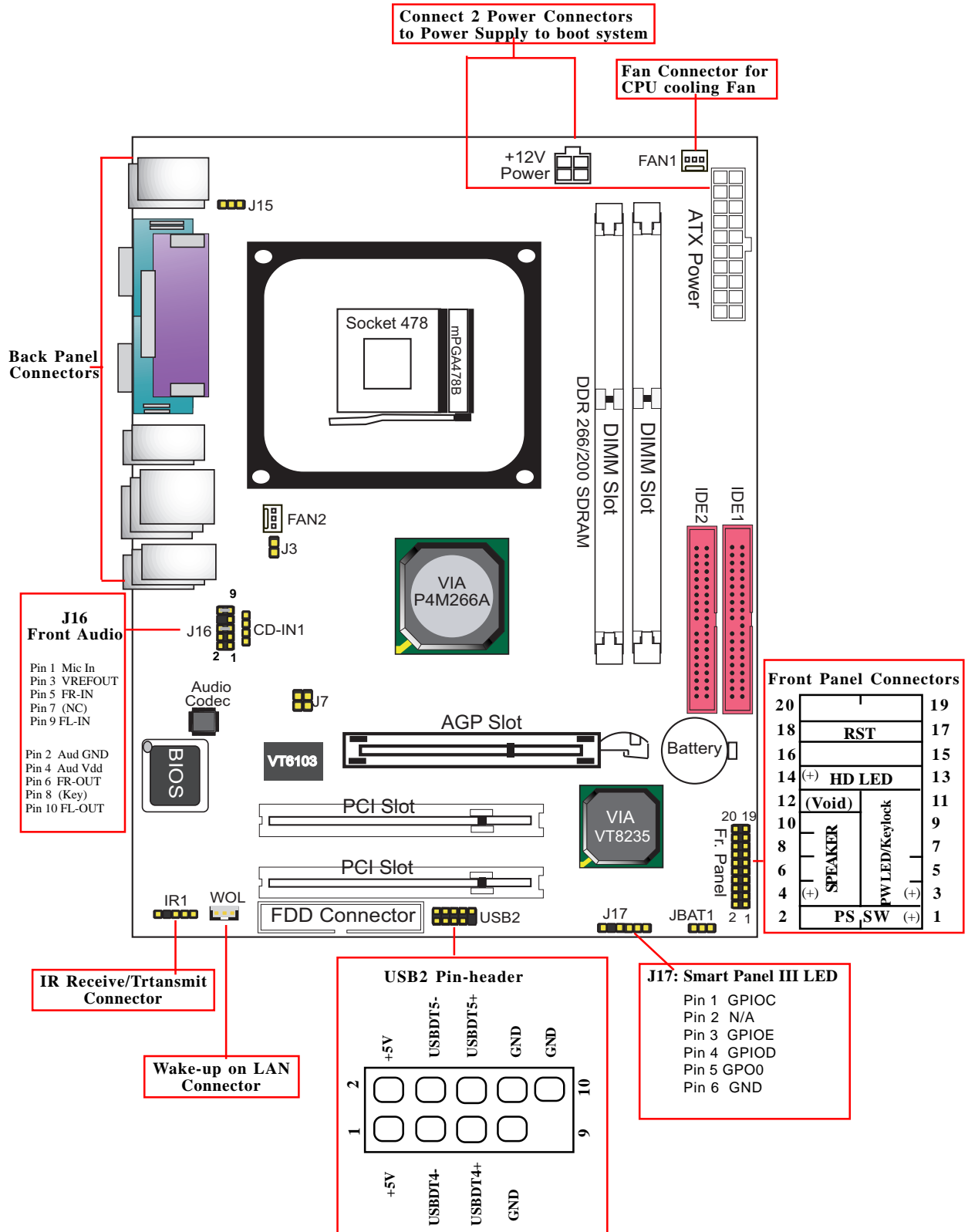


4PMMNL Abridged User Guide

1. 4PMMNL Component Layout



2. 4PMMNL Specification and Features

- **CPU**

Socket 478 for Intel P4 CPUs;
Supporting FSB 400/533MHz;

- **Memory**

Supporting DDR266/200 SDRAM with 2 DDR DIMM slots up to 2GB module size;

- **System Chipset**

North Bridge P4M266A; South Bridge VT8235;

- **Smart BIOS**

Full ACPI, APM, DMI, Green, PnP, CPU FSB, Multiplier Ratio & Boot media Selection supported;

- **Integrated Graphics**

1x VGA connector and 1x AGP slot integrated;

- **LAN Controller Integrated**

- **Six USB 2.0 Ports supported**

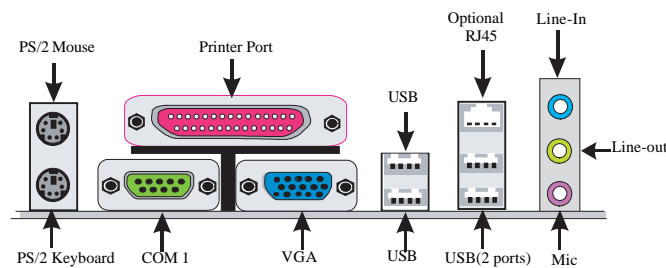
- **2x PCI slots integrated**

- **2x UltraDMA 66/100/133 IDE ports**



- **6-channel AC'97 Codec integrated**

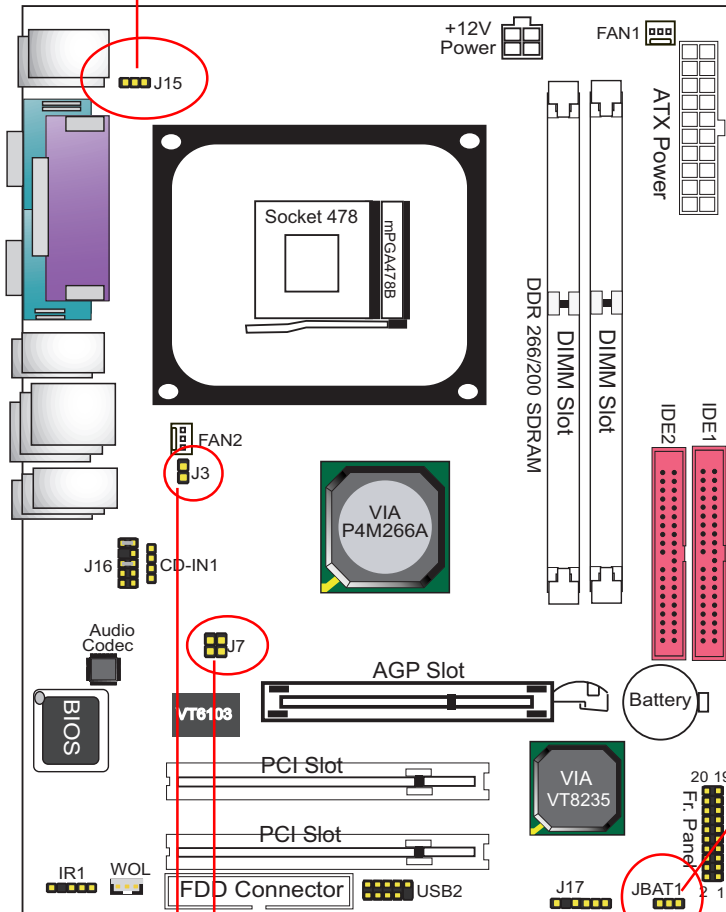
- **Back Panel**



6xUSB ports; 1xVGA port; 1xCOM port; 1xParallel port; 1xPS/2 keyboard port; 1xPS/2 Mouse port;
1xLine-in; 1xLine-out; 1xMic;

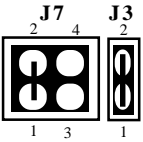
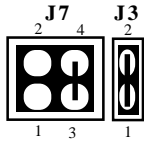
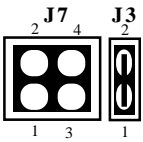


3. Jumper Settings

J15: KB/Mouse Wakeup	
1-2 closed 	Enabled
2-3 closed 	Disabled (Default)



JBAT1: Jumper Clear CMOS	
1-2 closed 	Normal (Default)
2-3 closed 	Clear CMOS

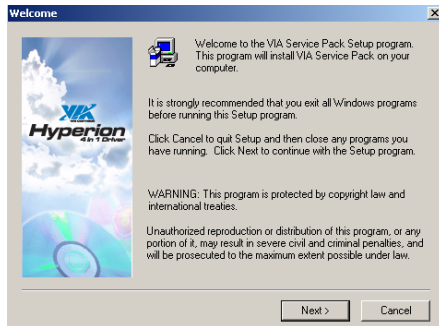
J3 & J7 : CPU Clock Select		
 <p>66 MHz CPU</p>	 <p>100 MHz CPU (default)</p>	 <p>133 MHz CPU</p>

4. Drivers Installation

When starting to install drivers or utilities, if you are prompted to choose a proper motherboard model, please click on "4PMMNL" for this motherboard.

(1). VIA 4-in-1 Service Pack:

Choose this auto-run program in you Driver CD, and the Setup Program will guide you through the whole VIA 4-in-one Service Pack Setup.



(2). VGA Driver:

Choose this auto-run program in you Driver CD, and the Setup Program will guide you through the whole VGA driver Setup.



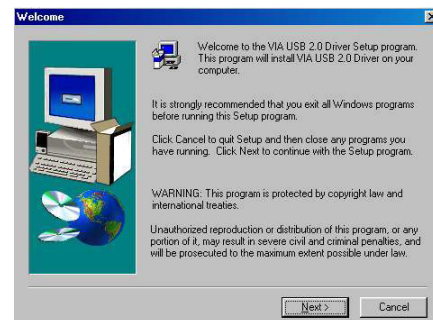
(3). C-Media Audio Codec:

This motherboard comes with C-Media Xear 3D CODEC . You can find the Audio driver from this Auto-run menu.



(4). USB 2.0 Driver Setup:

Choose this auto-run program in you Driver CD, and the Setup Program will guide you through the whole USB 2.0 driver Setup.



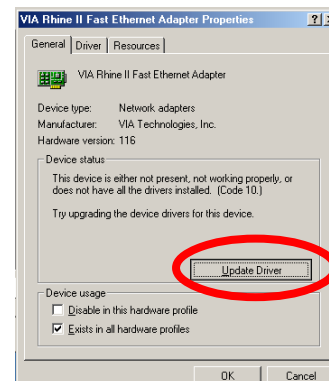
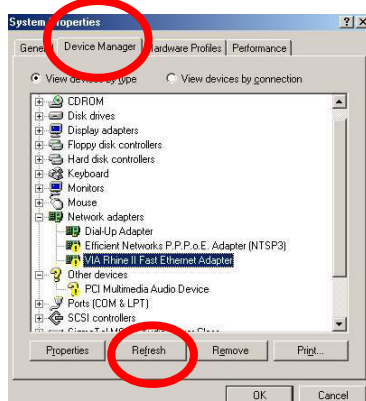
(5). LAN Driver Setup:

LAN drivers can be installed into your operating system either automatically by the auto-run setup program or manually by user. Follow the following illustrations to install LAN driver for your operating system:

1. If your system (e.g. Win2K or WinXP) detects the onboard network hardware, it will go on find out the proper LAN driver and install it right away.

2. If your system is Win98 or if you want to install the LAN driver by yourself, please enter the "Device Manager" of your Windows system. You can see that the "VIA Rhine II Fast Ethernet Adapter is not set up yet. Click "Refresh" to set up the driver.

2. Click "Update Driver" to continue, and then follow the instructions from the Setup windows to finish setup.



[Note]

If the OS is windows 98, the Lan driver located at **Optical Drive:\Driver\Lan\VT6103**