

Setting up the MFC 1870MC or MFC 1970MC and Computer to Work Together

..... ***Before You Install Multi-Function Link***

This chapter takes you through each step of the installation process. Read it carefully to ensure a problem-free installation.

Package Contents

Before you begin the Multi-Function Link installation, please check the contents of your package:

- Brother CD-ROM
- Multi-Function Link Cable and PC I/F Box
- Warranty, Upgrade and Licensing Materials

PC Configuration Requirements

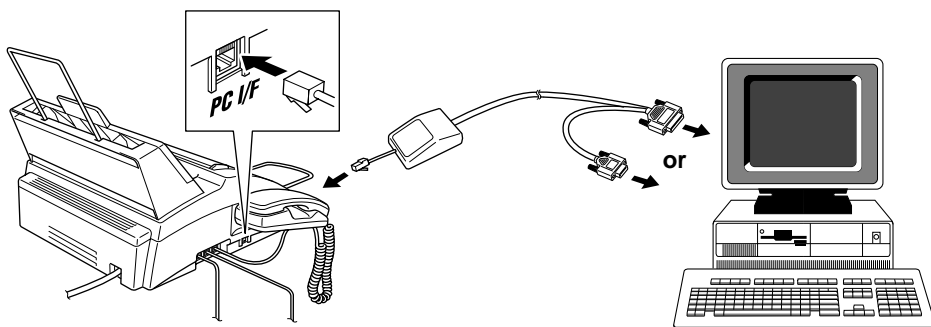
Your PC must meet or exceed the following minimum system configuration requirements for you to install and use Multi-Function Link:

CPU	80486/66 or higher
RAM	8MB or greater for Windows® 3.1 or 3.11 8MB or greater for Windows® 95 (16MB recommended) 16MB or greater for Windows NT® Workstation Version 4.0 (32MB recommended)
Hard Disk Drive	50MB
Operating System	Windows® 3.1, 3.11, 95 or NT® Workstation Version 4.0
Port	Available Serial port
CD-Rom Drive	

Connecting MFC 1870MC or MFC 1970MC to Your PC

Follow the instructions below to hook up the Multi-Function Link Cable.

- 1 Position your Brother MFC near your personal computer CPU (maximum distance of approximately 5-6 feet).
- 2 Make sure the power to the PC is switched off and the MFC is unplugged.
- 3 Connect the RJ-8 connector of the Multi-Function Link Cable to the side of your Brother MFC in the jack labeled *PC I/F*.
- 4 Connect the 25-pin *female* RS-232 connector of the Multi-Function Link Cable to your PC in the available *male* serial communications port. Use the 9-pin adapter if your PC requires it. (See your PC owner's manual for the correct interface port for connection.) **NOTE: If your PC is an IBM Aptiva, and MWAVE card is using COM1. You must connect the Multi-Function Link Cable to another COM serial port that is available.**



Available Options



Install Multi-Function Link Software

Click on Install Multi-Function Link Software to access the Software Installation window.

On-Line Documentation

On-Line Documentation includes all online documentation. To view the On-Line Documentation, you must first install the Acrobat Reader software from the CD-ROM, by clicking on the Install Acrobat Reader button.

Product Support

This is a page of all Brother support numbers.

Brother Web Link

Brother WEB Link visits the Internet Brother Home Page on the World Wide Web. You can find more information about Brother products, from product specifications sheets to Frequently Asked Questions (FAQ's). You must have service with an Internet service provider.

Click **Exit** to exit the CD-ROM window, or click **Return** to return to the previous window.

Installing the Multi-Function Link Software

Make sure your MFC 1870MC or MFC 1970MC is connected to your PC as described earlier and that both machines are plugged in and switched on.

Overview of Basic Steps

- 1** Insert the Brother CD-ROM into your CD-ROM drive and access the Installation Window.
- 2** Enter the command for your version of Windows®, if needed.
- 3** Select the option “Install Multi-Function Link Software”.
- 4** Follow the installation instructions.

Accessing the Software Installation Window

If you are using Windows® 95 or Windows NT® Workstation Version 4.0:

- When you insert the CD-ROM into the PC with Windows® 95 or Windows NT® Workstation Version 4.0, the screen appears automatically.
- You can also run: **X:SETUP.EXE** for Windows® 95 from Explorer on the root directory of the CD-ROM

If you are using Windows® 3.1 or 3.11:

- From the File Manager run:
X:SETUP.EXE (“X” is the drive letter for your CD-ROM drive). This will start the Software Installation program.

Installing the Brother Software

- 1** Insert the Brother CD-ROM into your CD-ROM drive.
- 2** Enter the command: **X:SETUP.EXE**

The Brother LOGO will be displayed on the screen.

The Brother software will run the appropriate install program.

The Brother software will identify your Windows® Operating System and automatically run the appropriate install program for your version of Windows®.

3 Click on the “Install Multi-Function Link Software” option.

The Software Installation window will appear.

The Software Installation screen automatically loads. Multi-Function Link includes Visioneer PaperPort applications.

4 Follow the installation instruction:

Follow the instructions on the screen. The last step will be to restart Windows®.

Viewing On-Line Documentation



Make sure you have installed the Acrobat Reader software. (Click on the Install Acrobat Reader button and follow the instructions on the screen.)

After the Acrobat Reader is installed, click on the View Multi-Function Link Documentation button. When the Table of Contents appears, select a chapter by clicking on it.



Since the Multi-Function Link Pro manual is On-Line Documentation only, you may wish to print a copy by selecting Print from the File pull-down menu.

CHAPTER FOURTEEN

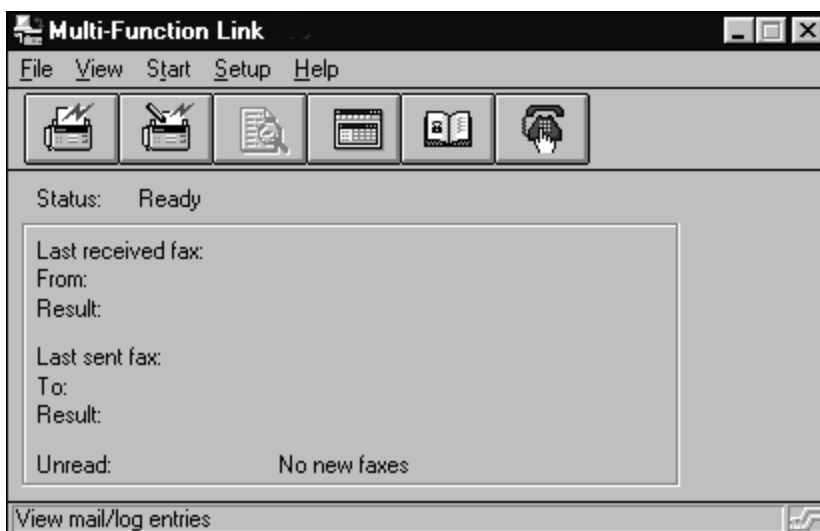
Using the Multi-Function Link Software (For MFC 1870MC and MFC 1970MC Only)

Introduction

This chapter outlines the basics of the Brother software, so you can get started using the Multi-Function Link software. Detailed installation and setup instructions are in the On-Line Documentation section of the Brother CD-ROM that is included with your MFC. Be sure to check the online ReadMe file for last-minute, important information that was not included in the On-Line Documentation.

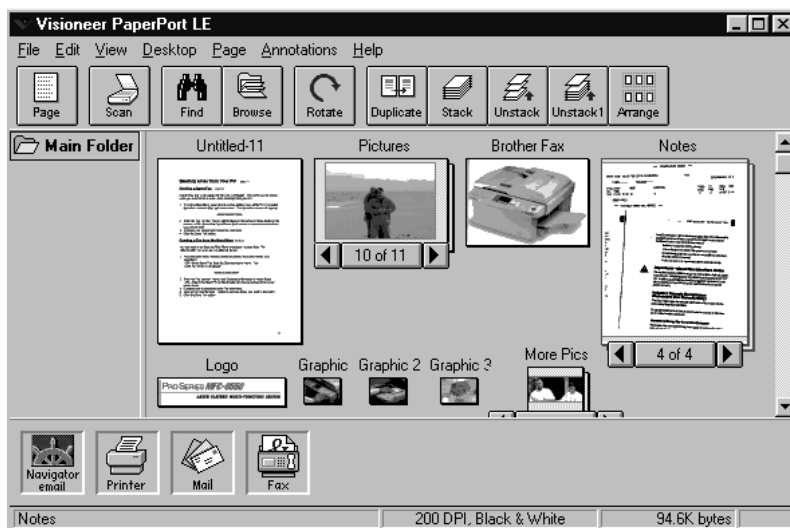
Running the Brother Software

The software included with your MFC consists of two parts, the Multi-Function Link and Visioneer PaperPort LE for Brother.



Multi-Function Link

The Multi-Function Link Main Menu is the application used for all fax sending and receiving operations. It also contains an electronic Phone Book program and a Log Manager that maintains a record of all PC fax transactions. The Main Menu can be accessed through the Brother Multi-Function Link program group.




Visioneer PaperPort LE

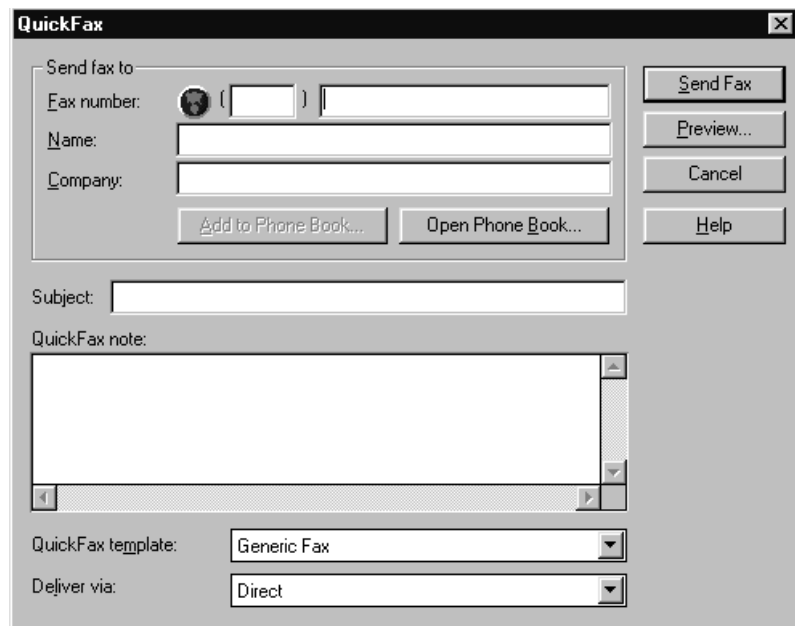
Visioneer PaperPort LE for Brother is a document management application. You will use PaperPort to view incoming faxes and scanned documents. PaperPort has a sophisticated, yet easy to use filing system that will help you organize your documents. It allows you to combine or "stack" documents of different formats for printing, faxing, or filing. PaperPort can be accessed through the PaperPort program group.

Sending a Fax from Your PC

Sending a Quick Fax

A QuickFax is a cover page only fax with a message. This option is very useful when you want to fax a quick, short message from your PC.


- 1 From the Main Menu, select the QuickFax button  or select QuickFax from the Start pull-down menu. The QuickFax screen will appear.

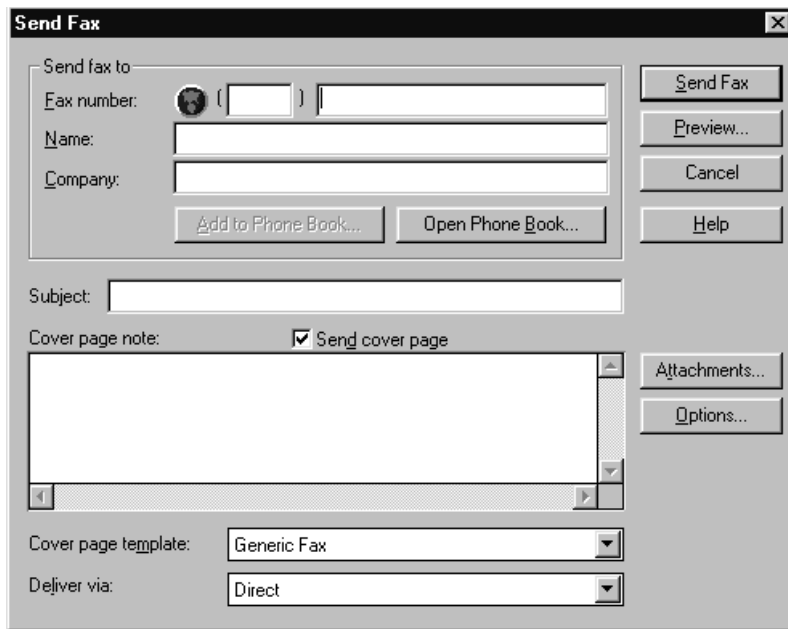


- 2 Enter the Fax number, Name, and Company information in these fields on the screen—OR—Select the Open Phone Book... button to choose someone from your phone book.
- 3 Complete the Subject and QuickFax note fields.
- 4 Click the Send Fax button.

Sending a Fax from the Main Menu

You can send a fax from the Main Menu and attach multiple files. The “attachments” can even be in a different formats.

- 1 From the Main Menu window, select the Send Fax  —OR—Select Send Fax from the Start pull-down menu. The Send Fax window will appear:



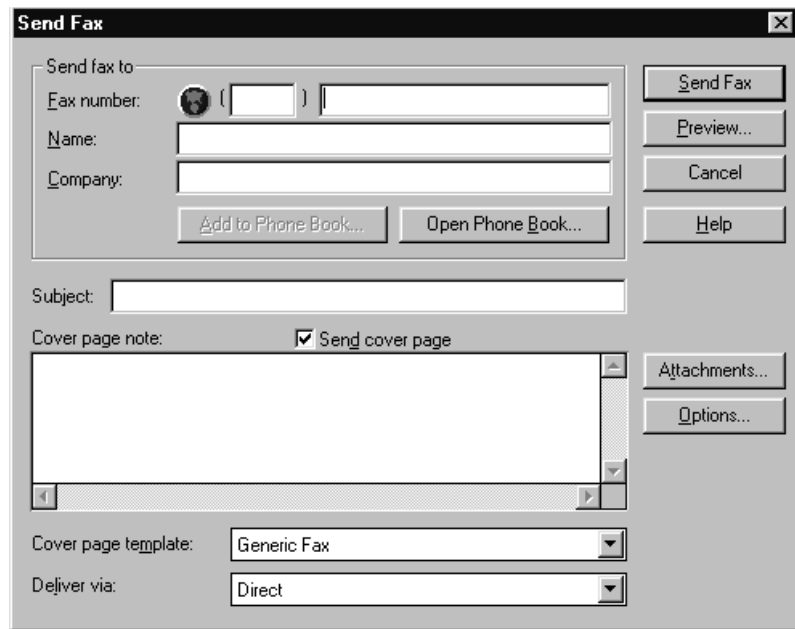
- 2** Enter the Fax number, Name, and Company information in these fields
—OR—Select the Open Phone Book button to choose someone from your phone book.
- 3** Complete the Subject and Cover page note fields.
- 4** Click on the Attachments... button to add any file(s) you want to fax with it.
- 5** Click the Send Fax button.

Sending a Fax from a Windows® Application

You can send a fax directly from any Windows® application using the following steps:

- 1** Create the document in a Windows® application.
- 2** Select Brother MFL Fax as your printer.
- 3** Select the Print command to begin the fax transmission.

The Fax Sending dialog box will appear :



The 'Send Fax' dialog box contains the following fields and controls:

- Send fax to:**
 - Fax number:** A text field with a globe icon and parentheses for international dialing.
 - Name:** A text field.
 - Company:** A text field.
 - Buttons:** 'Add to Phone Book...' and 'Open Phone Book...'.
- Subject:** A text field.
- Cover page note:**
 - Send cover page:** A checked checkbox.
 - Text area:** A large multi-line text area for the cover page note.
 - Buttons:** 'Attachments...' and 'Options...'.
- Cover page template:** A dropdown menu currently set to 'Generic Fax'.
- Deliver via:** A dropdown menu currently set to 'Direct'.
- Right-side buttons:** 'Send Fax', 'Preview...', 'Cancel', and 'Help'.

- 4 Enter the name and fax number of the recipient or select the Open Phone Book... button and choose a name. Select Close to return to the Send Fax dialog box.
- 5 Select the Send cover page check box to include a cover page.
- 6 Select the Send Fax button.

Receiving Faxes into the PC

*See
Using the
MFC 1870MC
and
MFC 1970MC
with Your PC*

To receive faxes into your PC through the MFC, you must first connect your MFC to your computer. Then, you can load the software.

Before You Begin

Use the following checklists for the MFC and PC, to make sure you have properly set up the MFC and PC to work together.

Checklist for the MFC:

The default setting for MF Link mode is **PC PRIMARY** in this setting all faxes will be routed into the PC unless it is not turned on. If the PC is turned off, incoming faxes will be printed on the MFC.

- 1 To make sure the MF Link mode is set to **PC PRIMARY**, press **Function**, **7**, **8**.
- 2 Use **◀** or **▶** to select **PC PRIMARY**.
- 3 Press **Set**.
- 4 Press **Stop** to exit.

On your PC:

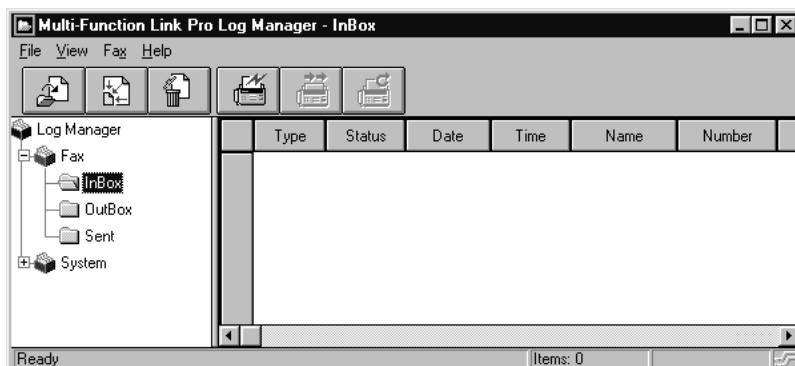
- 1 In the Main Menu, select the Setup pull-down menu.
- 2 Select Preferences...
- 3 Under Answer Mode, select Fax only.
- 4 Click the OK button.
- 5 Make sure the MFC is connected to the PC.
- 6 Keep the PC and the Multi-Function Link Main Menu running at all times.

Viewing Received Faxes

Faxes that are received into the PC will appear in the InBox of the Log Manager. To access the Log Manager, from the Main Menu click the Log Manager button



—OR— From the Start pull-down menu, select Mail/Log.



- 1 In the Log Manager, select the Fax folder.
- 2 Then select the InBox folder. A listing of your incoming messages will appear on the right side of the window.

- 3 Double-click on the fax you wish to view.

The Visioneer PaperPort Viewer will run automatically and the fax you selected from the list will be displayed.

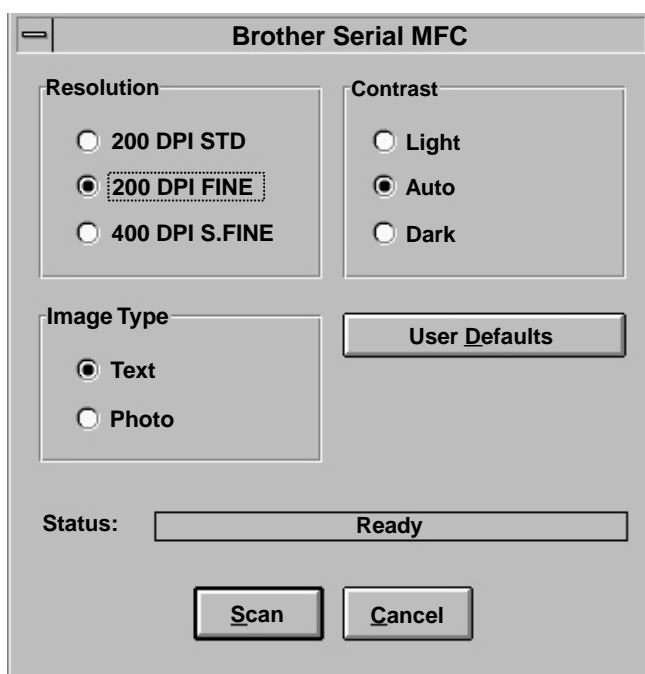
Scanning a Document

The Brother Multi-Function Link software includes a TWAIN compliant scanner driver. TWAIN drivers meet the standard universal protocol for communicating between scanners and software applications. This means that not only can you scan images directly into the PaperPort viewer that Brother included with your MFC, but you can also scan images directly into hundreds of other software applications that support TWAIN scanning. These applications include popular programs like Adobe Photoshop, Aldus Pagemaker, Corel Draw and many more.

To choose the Brother Multi-Function Link as your scanner driver, select it under the “Select scanner” or “Select source” option in your software.

Scanning Options

When you scan using the Brother Multi-Function Link Scanner driver, a scanning options dialog box will appear:



Set the following options based on each document to be scanned, then click the SCAN button to start scanning.

Resolution

You can choose one of three resolutions, 200 DPI STD, 200 DPI FINE or 400 DPI S.FINE. The higher the number of dpi (dots per inch), the clearer the image will appear on your PC. However, the size of the image file increases with the dpi. Try scanning at different resolutions to determine the best resolution for your needs.

Contrast


To have the scanner adjust the contrast automatically, choose Auto. If your original is too light, set the contrast to Light. If the original is too dark, set the contrast to dark.

Image Type

If you are scanning text or black and white line art, choose Text as the image type. If you're scanning a photo or detailed picture with many different colors, choose Photo as the image type.

Scanning into the PaperPort Viewer

To scan into the PaperPort viewer that was provided with your MFC, run the PaperPort viewer program and then select the SCAN button on the top of the

screen  or select ACQUIRE from the File pull-down menu.

C H A P T E R F I F T E E N

Multi-Function Link (option) For FAX 1570MC

If you have a FAX 1570MC you can purchase the optional Multi-Function Link package (also called “Missing Link”). Multi-Function Link turns your fax machine into a multifunction center, by enabling you to use your fax machine as a printer and a scanner and to use it to fax messages from Windows applications in your computer.

Multi-Function Link is available at most Brother retailers. If you cannot find it, you can order Multi-Function Link directly from Brother. The item number is PCI-1.

Installation instructions will be included with PCI-1. However, it is important that you hook up your fax machine to your computer before you install the software.

Glossary

Activity Report Lists information about the last 30 incoming and outgoing faxes.

TX means Transmit. RX means Receive.

ADF (Automatic Document Feed) Refers to the number of pages that can be placed in the document feeder and fed one at a time automatically.

All Dial List A listing of names and numbers stored in One Touch and Speed Dial memory, in numerical order.

automatic fax transmission Sending a fax without picking up the handset or pressing **Speaker Phone**.

Backup Print Sets your FAX/MFC to print a copy of faxes that are received and stored in memory.

beeper The sound the keys make when they are pressed, an error occurs or a document has been received or transmitted.

broadcasting The ability to send the same fax message to more than one location.

Call Back Message Allows you to send a fax and then leave a message for the other party to call you back.

Call Reservation Allows you send a fax and then at the end of transmission, you can talk with the other party.

Caller ID A service purchased from the Telephone Company that lets you see the number (or name) of the party calling you.

Cancel Job Cancels a programmed job, like Delayed Fax or Polling.

CNG tones The special tones (beeps) sent by fax machines during automatic transmission to tell the receiving machine that they are from a fax machine.

communication error (or Comm. Error) An error during fax sending or receiving, usually caused by line noise or static.

Contrast Setting to compensate for dark or light documents, by lightening dark documents or darkening light documents.

Cover Page Prints a page at the other party's machine, that contains the sender and recipient's name and fax number, number of pages and comment. You can generate an electronic cover page at the other end with pre-programmed information from memory or you can print a sample cover page to fax with your document.

Delayed Fax Sends your fax at a later time that day.

Distinctive Ring A service purchased from the Telephone Company that provides another phone number on an existing phone line. The Brother FAX/MFC uses the new number to simulate a dedicated fax line.

ECM (Error Correction Mode) Detects errors during fax transmission and resends the page(s) of the document that had an error.

F/T Ring Time The length of time the FAX/MFC rings (when the answer mode setting is FAX/TEL) to notify you to pick up a voice call that it answered.

Fax Forwarding Sends a fax received in memory to another preprogrammed fax number.

fax tones The signals sent by sending and receiving fax machines while communicating information.

Fine Mode Resolution is 196 x 203 dpi. It is used for small print and graphs.

gray scale The shades of gray available for copying and faxing photographs.

group number A combination of One Touch and/or Speed Dial numbers that are stored on a One Touch key for Broadcasting.

ICM (incoming message) A recorded voice message received into an external answering machine or the digital Message Center.

Interrupt Temporarily puts a waiting job on hold while you perform another operation.

interval The preprogrammed time period between automatically printed Activity Reports. You can print Activity Reports on demand without interrupting this cycle.

LCD (liquid crystal display) The display screen on the FAX/MFC that shows interactive messages during On-Screen Programming and defaults to the date and time when the machine is idle.

manual fax When you press **Speaker Phone** —OR— lift the handset so you can hear the receiving fax machine answer before you press **Start** to begin transmission.

Memory Status List Shows how much memory is being used, how much is left, and the type of messages in memory.

memory usage Instructs the FAX/MFC how to allocate the memory.

Multi-Function Link Ready FAX/MFC models that have a PCI/F Port to connect a computer, using the optional hardware/software package called “Missing Link.”

Next Fax Reservation Accepts the next document in the document feeder for transmission while the FAX/MFC is still receiving.

OGM (Out-Going Message) The message callers hear when you call your Message Center or external answering machine.

One Touch Keys on the FAX/MFC control panel where you can store numbers for easy dialing. You must use a separate key for each number.

Out of Paper Reception Receives faxes into the FAX/MFC's memory when the machine is out of paper.

Overseas Mode Makes temporary changes to the fax tones to accommodate noise and static on overseas phone lines.

Paging Feature enables your fax unit to call your pager when a fax and/or a voice message is received into its memory.

Pause Allows you to place a 3.5 second delay in the dialing sequence stored on One Touch and Speed Dial numbers.

Photo Mode A resolution setting that uses varying shades of gray for the best representation of photographs.

polling The process of a fax machine calling another fax machine to retrieve waiting fax messages.

Pulse A form of dialing on a telephone line.

print reduction reduces the size of incoming faxes.

Quick Scan Enables the FAX/MFC to scan a document into memory before faxing it.

remote access The ability to access your Message Center remotely from a touch tone phone.

remote activation allows you to transfer a fax call, answered at an extension phone, to the FAX/MFC.

remote access code The four-digit code that allows you to call and access your Message Center from a remote location.

resolution The number of vertical and horizontal lines per inch. See: Standard, Super Fine and Photo.

Rotary A form of dialing on a telephone line.

scanning The process of sending an electronic image of an original paper document into your computer.

speed dial A preprogrammed number for easy dialing. You must press the **Speed Dial** key and then two digit code to start the dialing process.

Standard resolution 98 x 203 dpi. It is used for regular size text and quickest transmission.

Station ID The stored information that appears on the top of faxed pages. It includes the sender's name and fax number.

super fine resolution 392 x 203 dpi. Best for very small print and line art.

Tel Index An electronic, alphabetical listing of stored One Touch, Speed Dial and Group numbers.

thermal transfer A printing process in which heat transfers carbon ink from a ribbon to plain paper.

Toll Saver A Message Center setting that allows the FAX/MFC to answer after two rings when a message(s) was received and after four rings when there are no messages. The caller can hang up (after two rings) without paying for the call if there are no messages to retrieve.

Tone A form of dialing on the telephone line used for Touch Tone telephones.

transmission The process of sending documents over the phone lines from your FAX/MFC to the receiving fax machine.

User Option List A printed report that shows the current settings of your FAX/MFC.

Xmit Report (Transmission Report) A listing of each transmission, showing caller ID, date, time, and number of pages.

Specifications

Type	Desktop facsimile transceiver
Compatibility	ITU-TS Group 3
Coding system	Modified Huffman (MH)
Modem speed	14,400/12,000/9600/7200/4800/2400; Automatic Fallback
Document input width	5.8 inches to 8.5 inches (148 mm to 216 mm)
Scanning/Printing width	8.2 inches (208 mm)
Paper Cassette	200 Sheets (20 lbs.)
Printer type	Line Thermal with Ribbon
Gray scale	64 levels
Display	LCD, 16 characters
Polling types	Standard, Sequential
Contrast control	Automatic/Super Light/Super Dark (manual setting)
Resolution	<ul style="list-style-type: none"> • Horizontal 203 dot/inch (8 dot/mm) • Vertical Standard — 98 line/inch (3.85 line/mm) Fine, Photo — 196 line/inch (7.7 line/mm) Superfine, Photo (copy) — 392 line/inch (15.4 line/mm)
Memory Capacity	MFC 1870MC — 512 KB (up to 20 pages*) FAX 1570MC, MFC 1970MC — 1 MB (up to 50 pages*)
One touch dial	24
Speed-dial	36 stations (MFC 1870MC), 100 stations (FAX 1570MC, MFC 1970MC)
Automatic redial	3 times at 5 minute intervals
Speaker type	Full Duplex
Auto answer	0, 1, 2, 3 or 4 rings
Communication source	Public switched telephone network
Operating environment	41 - 95° F
Power source	120V AC 50/60Hz (USA, Canadian Version Only)
Power consumption	Standby: under 10 watts — Peak: under 110 watts
Dimensions	15.2 x 15.0 x 8.4 inches / 385 x 378 x 213 (mm)
Weight	12.3 lb / 5.6 kg

* "Pages" refers to the "Brother Standard chart no. 1" (a typical business letter, Standard resolution).
 Specifications are subject to change for improvement without prior notice.

Index

A

Accessories	127
Activation Code	16, 35, 50, 51
Activity Report	27, 83, 84
ADF	31
ALL DIAL List	27, 83
Alternating Displays	26
Answer Mode	14, 33, 34, 35
Assembly	7
AUTO DIAL	21
Automatic Document Feeder (ADF)	31
Automatic Transmission	33

B

Backup printing	64
Beeper	24, 27
Beeps	68, 70, 71
Broadcasting	23, 24, 45
Brother Bulletin Board	93, 126
Brother Customer Service	96, 97, 126
Brother Fax-Back System	20, 93, 94, 126
Brother Home Page	93, 126

C

Call Back Message	20, 48, 49, 83
CALL PICKUP	53
Call Reservation	26, 37, 48, 49
Caller ID	27, 28, 53
Canceling	26, 45
Chain Dialing.....	21, 22, 49
Cleaning	95, 97
Clearing Caller ID	54

Connecting	2, 10, 11, 14, 15
Contrast	26, 32
Control Panel	3, 4
Copy	26, 32, 57
Corrections	19
Cover Page	18, 20, 21, 26, 27, 28, 46, 47, 48, 83
Custom Telephone Features	14

D

D/R SET MODE	52
Daily Timer	28, 43
Date and Time	17, 18, 28
Deactivation Code	50, 51
Delayed Transmission	44
Distinctive Ringing	28, 33, 51, 52
Document	31, 32
Document Size and Resolution	31, 32
Double Ringing	36

E

Easy Receive	28, 34, 35
Energy Star Compliance	86
Enlarged Copies	57
Entering Text	18, 19
Erasing Message	64, 65
Error Messages	94, 95, 96, 97
Error Re-Transmission	27, 46
Extension Cord	88
Extension Telephone	33, 34, 50, 99
External Telephone	16

F

F/T (Fax/Tel) Mode	2, 28, 33, 35, 36, 37, 50, 52, 99
F/T (Fax/Tel) Ring Time	28, 33, 36, 50
Fax Forwarding	29, 66, 67, 71
Fax Tones and Handshake	2
Fax-Back System	20, 93, 126
FCC Notices	85, 86, 87
Fine Resolution	32, 98
Flexible Memory Settings	60
Function	25
Function Selection Table	26, 27, 28, 29

G

Gray Scale	118, 121
Group Number	23, 24, 45

H

HELP	1, 26
Hold	3, 4, 40

I

Inserting Spaces	19
Installation	5
Interrupting	44
Interval	2, 28, 84
ICM Recording Monitor	66

J

Jacks	11, 12, 98
Jam	31, 94, 95

L

Loading Paper	9
---------------------	---

M

Maintenance	93
Manual Dial	39
Manual Mode	33, 98
Manual Transmission	32
Maximum Message Time	65, 66, 75, 78
Memo	63, 66
Memory	7, 22, 41
Memory Full Message	43
Memory Status List	70
Memory Storage	24
Message Center Mode	59, 62
Message Center Pro	73
Message Storage	61
MSG CTR OGM	61
Multi-Function Link (for MFC 1870MC and 1970MC)	101, 102, 108
Multi-Function Link (option)	115
Multiple Resolution	50

N

Next-Fax Reservation	49
----------------------------	----

O

On-Screen Programming	25
One Touch List	83
One Touch Dialing	20, 21, 23, 27, 32, 33, 40, 41, 46, 49, 55, 96
OUT-OF-AREA	53
Outgoing Message (OGM)	61, 62, 76
Overseas Mode	26, 45

P

Packing List	6
Paging	29, 66, 67
Paper	27, 37
Paper Size	37, 38
Password	76
Pause	20, 21, 40

Personal Mailbox	65, 73, 76
Personal Mailbox memo	78
Personal Mailbox Remote Retrieval	78
PBXs	13
Photo	32, 56
PIN	66, 67
Playing Messages	63
Poll Waiting	49, 55
Polling	26, 49, 54, 55
Power	10, 88, 89
Power Failure	17, 22, 24
Printing	29, 48, 63, 64, 83, 84
Printing Message	63
Program Fax Forward Number	67
Program Paging Number	67
PRIVATE CALL	53

Q

Quick Scan	43
------------------	----

R

Receiving Faxes	33, 50
Recording Conversation	66
Recording Memo	66
Recording Monitor	66
Redial	33, 49
Reduction	27, 37, 38
Remote Access Code	68, 69, 70, 71
Remote Activation	16, 50, 51, 99
Remote Code	28, 51
Remote Commands	69
Remote Deactivation	50, 51
Remote Message Retrieval	70
Reports	27, 83
Resolution	26, 32, 49, 50, 56, 98
Ring Delay	15, 28, 33, 35, 36
Ring Pattern	52
Ring Volume	28, 37
Roll Over Phone Lines	11

S

Safety Instructions	88, 89
Scanning Document	113
Scroll	25
Sending Faxes	43
Setting Up	5
Smoothing	27, 37
Sort	56, 57
Speaker Volume	28, 36
Special Characters	18, 19
Specifications	121
Speed Dial	22, 23, 27
Stack	57
Standard Resolution	32
Station ID	1, 18, 20, 28, 46, 49
Super Fine Resolution	32

T

Telephone Answering Device (TAD)	2, 12, 14, 15, 16
Telephone Index	41, 83
Telephone Notices	85, 86, 87
Temporary Cover Page	47, 48
Test Sheet Procedure	1
Timer	26, 43, 44
Tone/Pulse	17, 28, 98
Transmission Verification Report	83, 98
Troubleshooting	93
Two-Line Phone System	11, 12
Two-Line Telephone Answering Device (TAD)	12

U

User Options	27, 83
--------------------	--------

V

Viewing faxes (PC)	112
Viewing On -Line Documentation	105
Voice Calls	39
Voice On Demand	73, 74, 79

Volume 62, 63, 66

W

Warranties 90

Windows® 3.1 or 3.11 102, 104

Windows® 95 102, 104

Windows® NT Workstation Version 4.0 102, 104

World Wide Web 93, 103, 126

Brother Numbers

Fax-Back System

Brother Customer Service has installed an easy-to-use Fax-Back System, so you can get instant answers to common technical questions and product information for all Brother products. This system is available 24 hours a day, 7 days a week. You can use the system to send faxes to any fax machine, not just the one from which you are calling.

If you can't resolve difficulty with your FAX/MFC using this manual, call our Fax-Back System, and follow the voice prompts to receive faxed instructions about using the system, and an index of Fax-Back subjects.

USA: *1-800-521-2846*

From within Canada: *1-800-681-9838*

The Brother Fax-Back System number (USA only) has been preprogrammed on One Touch key **01**.

Brother on the World Wide Web

You can find more information about Brother products, from product specification sheets to Frequently Asked Questions (FAQs), on the World Wide Web. Visit us at

<http://WWW.brother.com>

Brother Bulletin Board

Brother's Bulletin Board Numbers are

USA: *1-888-298-3616*

From within Canada: *1-514-685-2040*

For Customer Service

USA: *1-800-284-4329 (voice)*

1-908-575-8790 (fax)

From within Canada: *1-800-853-6660 (voice)*

1-514-685-4898 (fax)

From within Montreal: *1-514-685-6464 (voice)*

Ordering Accessories and Supplies

For the best quality results use only genuine Brother accessories, available at most Brother retailers. If you cannot find the accessory you need and you have a Visa, MasterCard, Discover or American Express credit card, you can order accessories directly from Brother.

USA:

1-888-879-3232 (voice)

1-800-947-1445 (fax)

www.brothermall.com

From within Canada:

1-800-668-2768 (voice)

DESCRIPTION	ITEM
Printing Cartridge	PC 201
2-PK Refill Rolls	PC 202 RF
4-PK Refill Rolls	PC 204 RF
Telephone Line Cord	Tell the Brother Representative your Model number so you get the appropriate color.
Telephone Handset	Tell the Brother Representative your Model number so you get the appropriate color.
Handset Curled Cord	Tell the Brother Representative your Model number so you get the appropriate color.
Paper Wire Extension	UL6856001
Document Support	UF8048001
Paper Support	UF8247001
Owner's Manual	UF8209001
Multi-Function Link/Missing Link Options for FAX 1570MC	PCI-1
* For MFC 1870MC and MFC 1970MC, Multi-Function Link Option on Floppy Disks, (Includes MFL and Visioneer PaperPort Only)	MFL2D31 (Floppy Disks for Windows® 3.1X) MFL2D95 (Floppy Disks for Windows® 95)

* Software on Floppy disks for the MFC 1870MC and MFC 1970MC is not available for Windows NT® Workstation Version.



Brother International Corporation
100 Somerset Corporate Boulevard
P.O.Box 6911
Bridgewater, NJ 08807-0911 USA

Brother International Corporation (Canada) Ltd.
1 rue Hôtel de Ville,
Dollard-des-Ormeaux, QC, CANADA H9B 3H6

Visit us on the World Wide Web
<http://www.brother.com>

These machines are made for use in the USA or CANADA only. We can not recommend using them overseas because it may violate the Telecommunications Regulations of that country and the power requirements of your fax machine may not be compatible with the power available in foreign countries. **Using USA or CANADA models overseas is at your own risk and will void your warranty.**